

*President's Council (August 2010)*

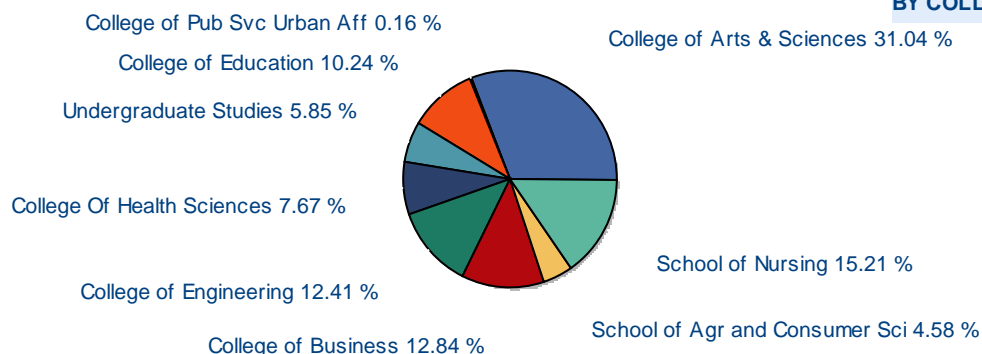
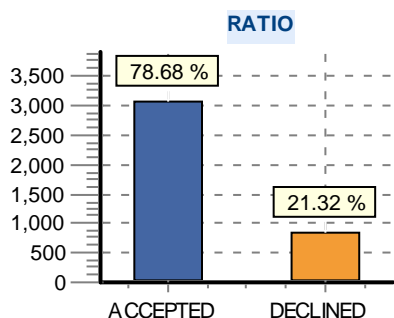
# ***Data Warehousing - Business Intelligence Initiative***

**Tennessee State University  
Tennessee Board of Regents**

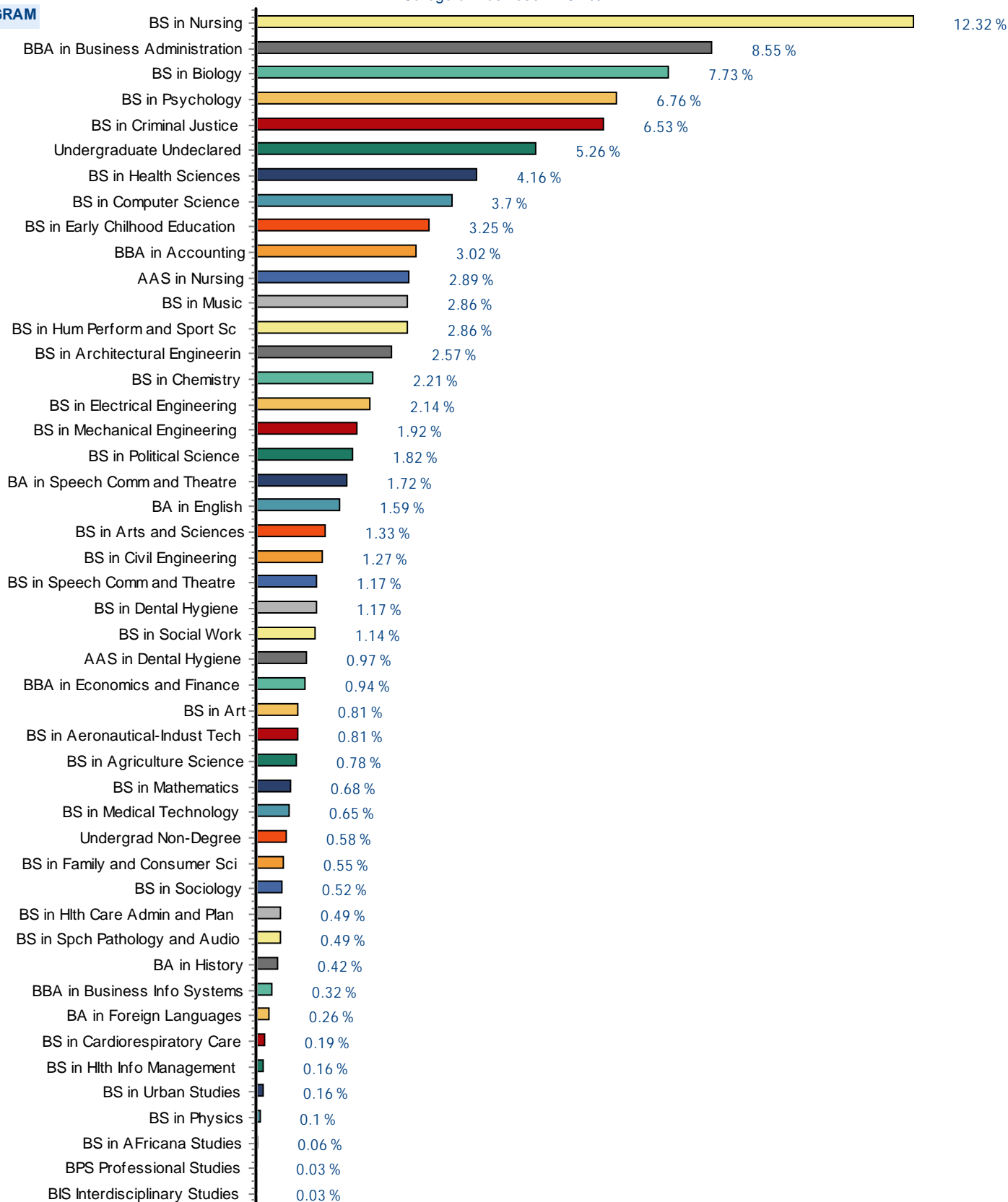
*The following pages contain mockup examples of some of the KPIs that are being created in the SunGard Higher Education ODS/EDW as part of the Open BI initiative. They have been created using test data and should not be relied upon for any purpose other than to illustrate how the KPIs are formatted for distribution.*



## BY COLLEGE



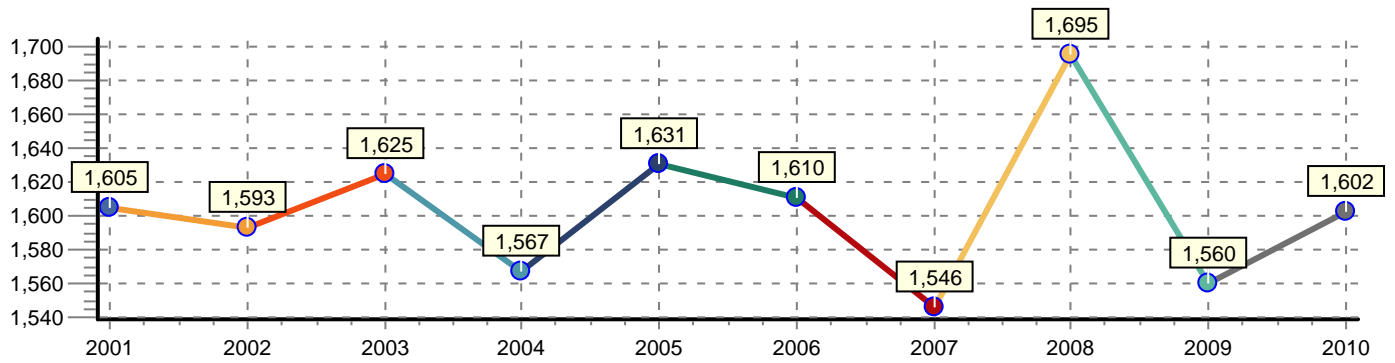
## BY PROGRAM





## Graduation By Year

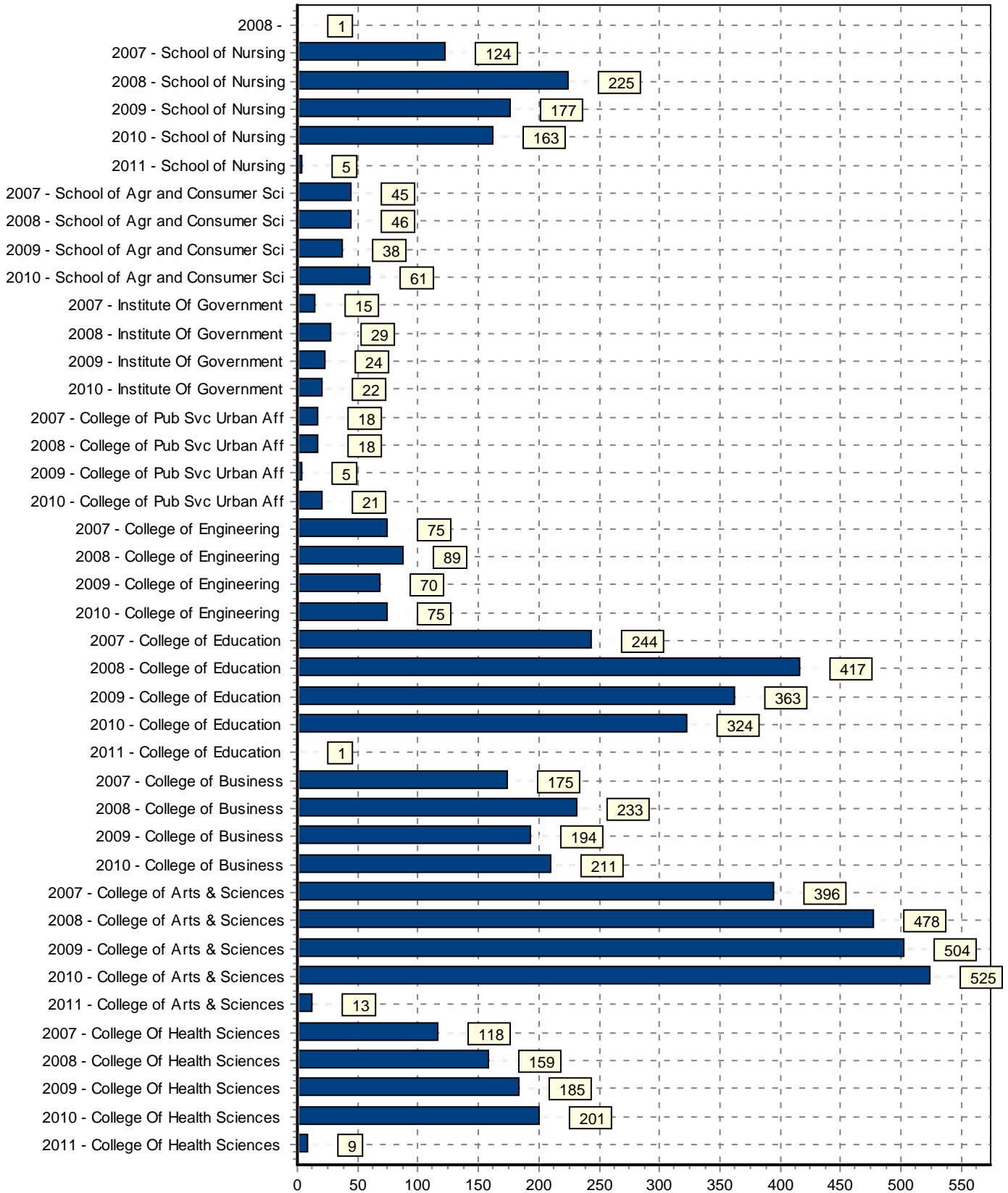
Academic Year Includes Summer, Fall, and Spring Semesters





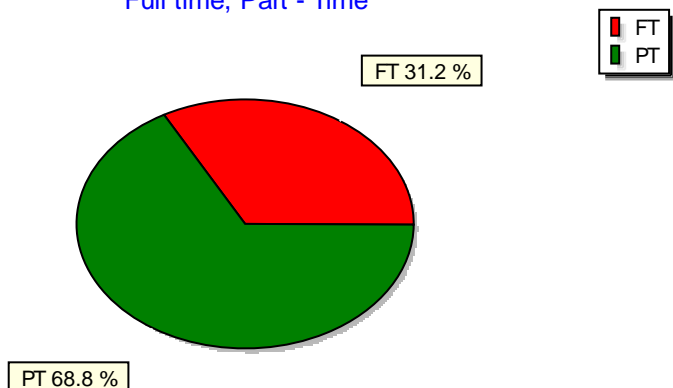
## Graduation by College

Academic Year Includes Summer, Fall, and Spring Semesters

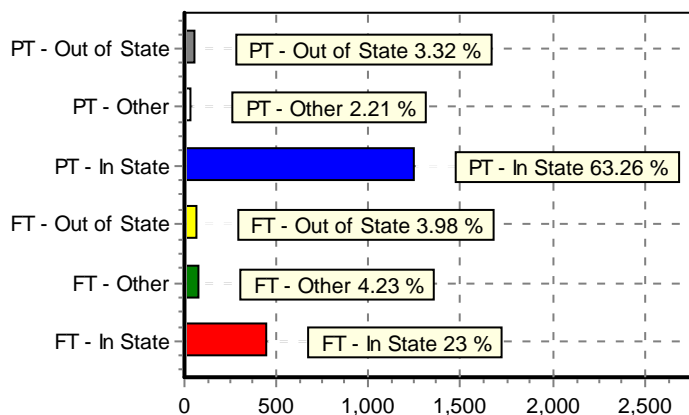


## Percentage of Full-Time vs Part-Time Graduate Students

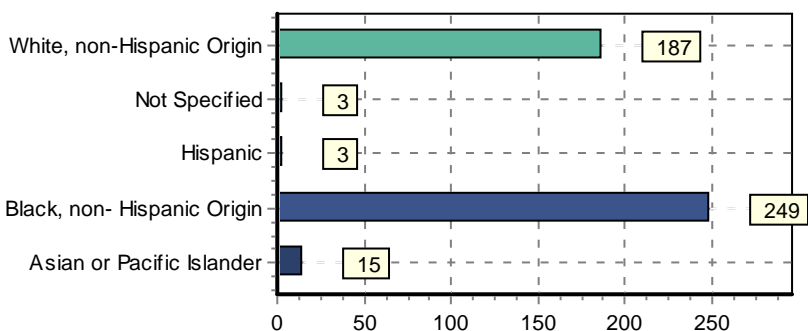
Full time, Part - Time



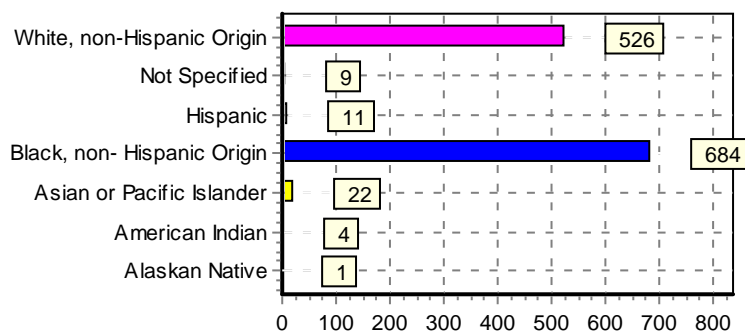
PT, FT Residency



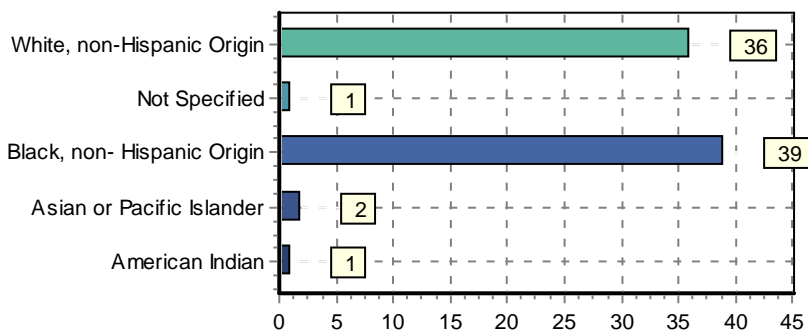
Instate FT Ethnicity



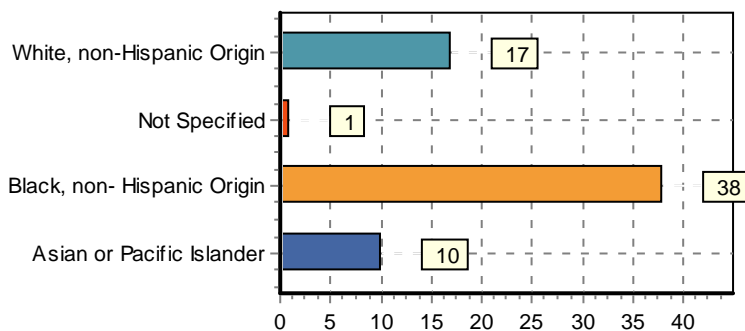
Instate PT Ethnicity



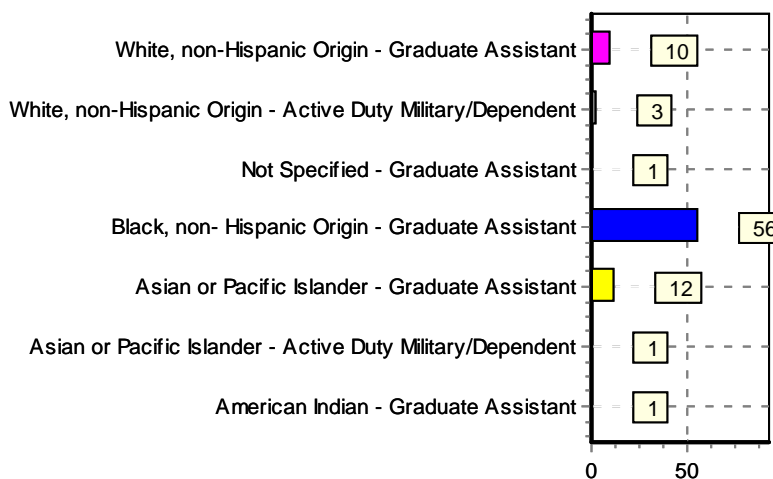
Outstate FT Ethnicity



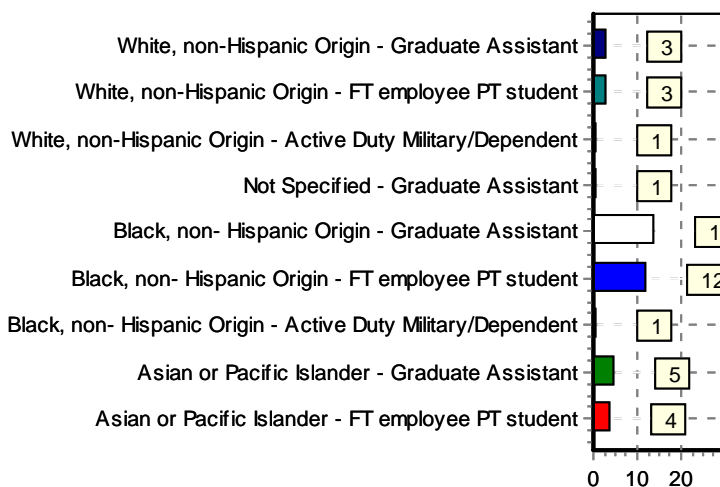
Outstate Ethnicity PT



Other FT residency status, Ethnicity



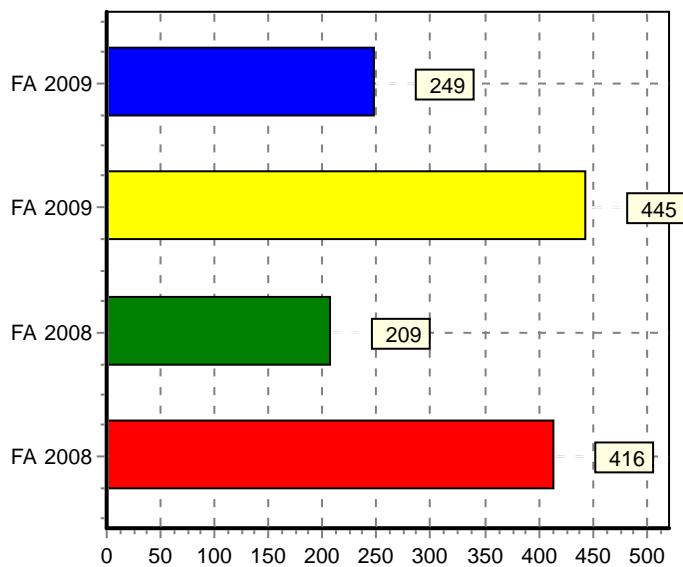
Other PT residency status, Ethnicity



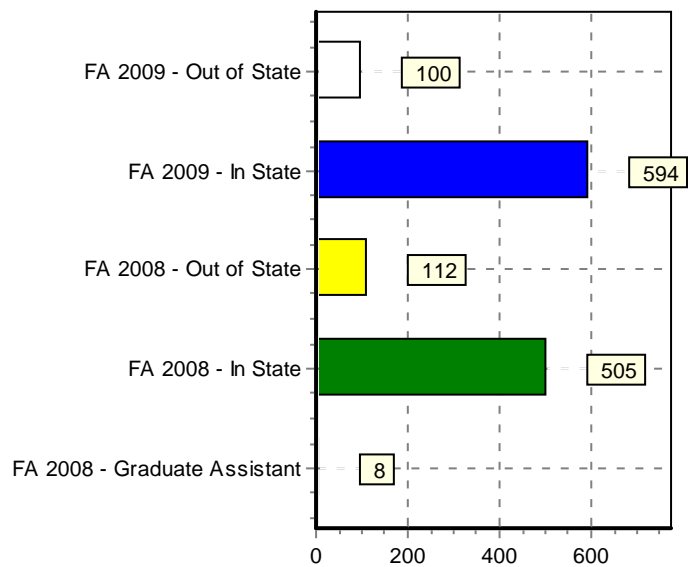


## Graduate Fall Enrollment

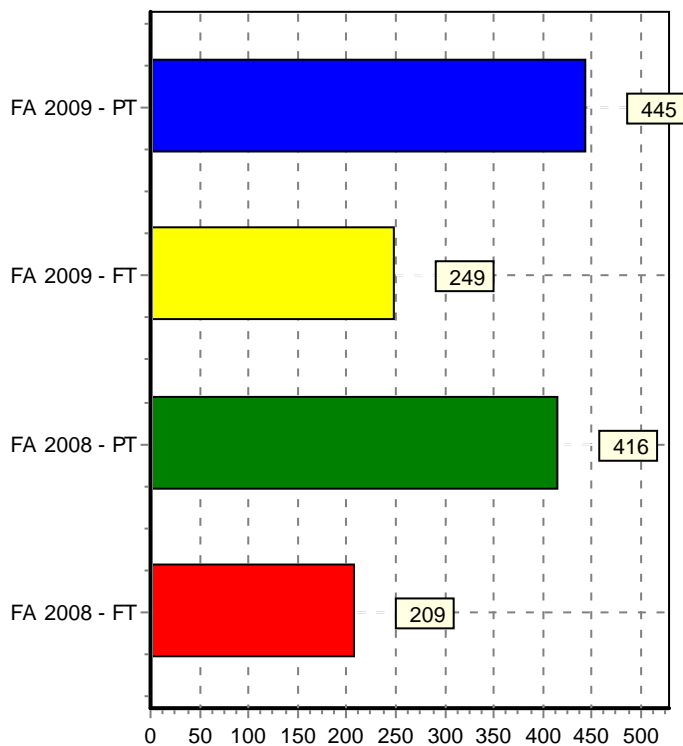
Graduate Fall Enrollment



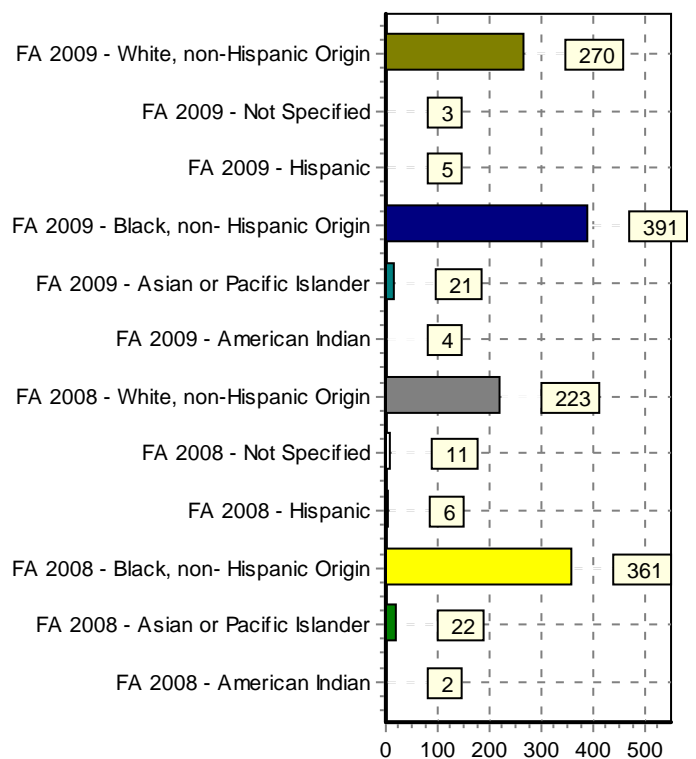
By Residency



FT/PT



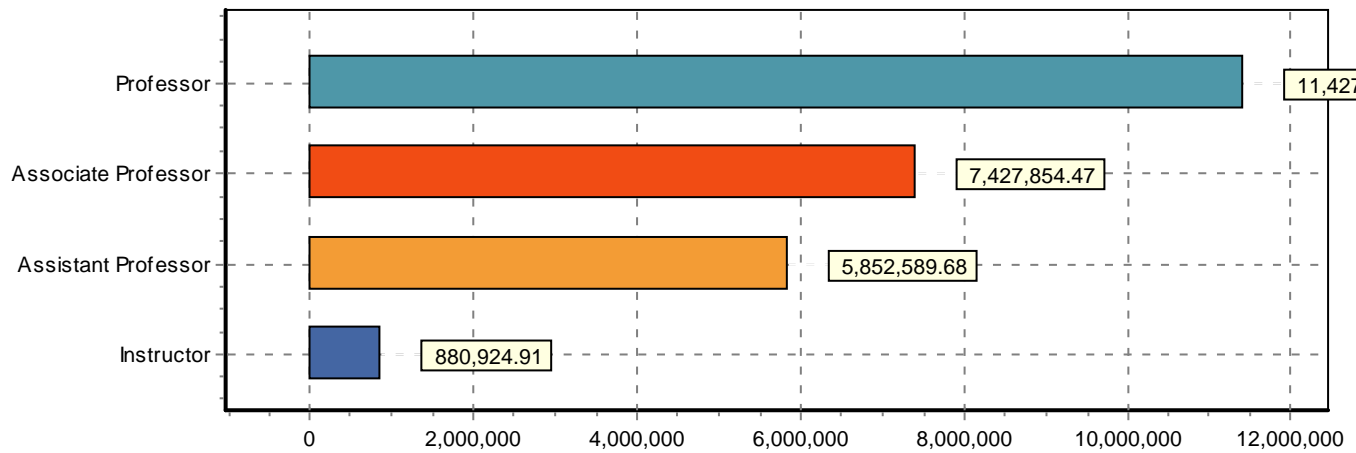
Ethnicity



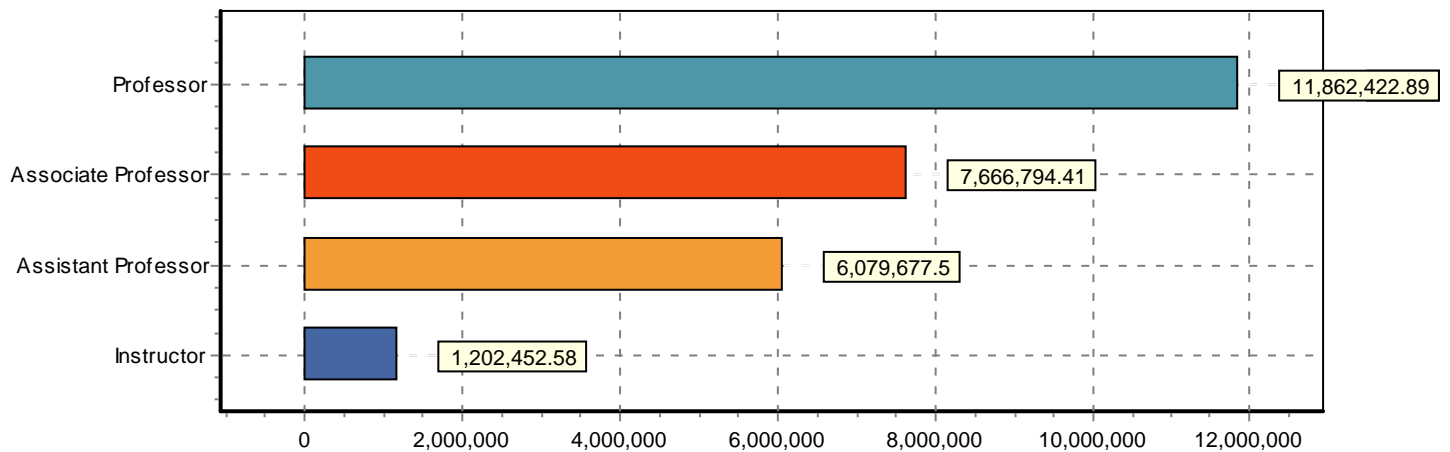


## Faculty Salary Totals by Fiscal Year

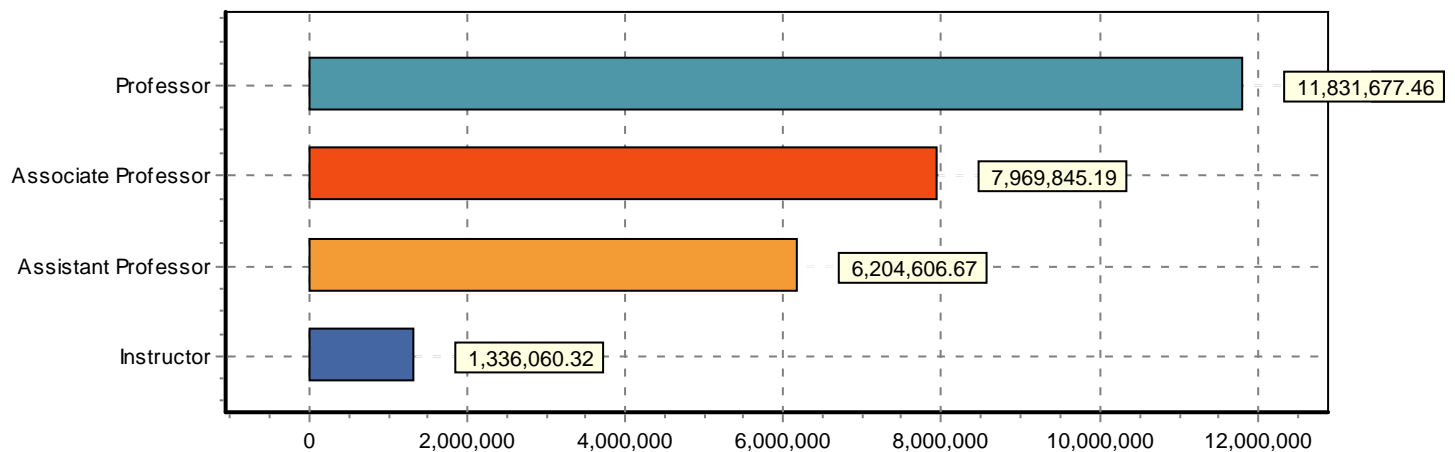
Totals for 2010



Totals for 2009



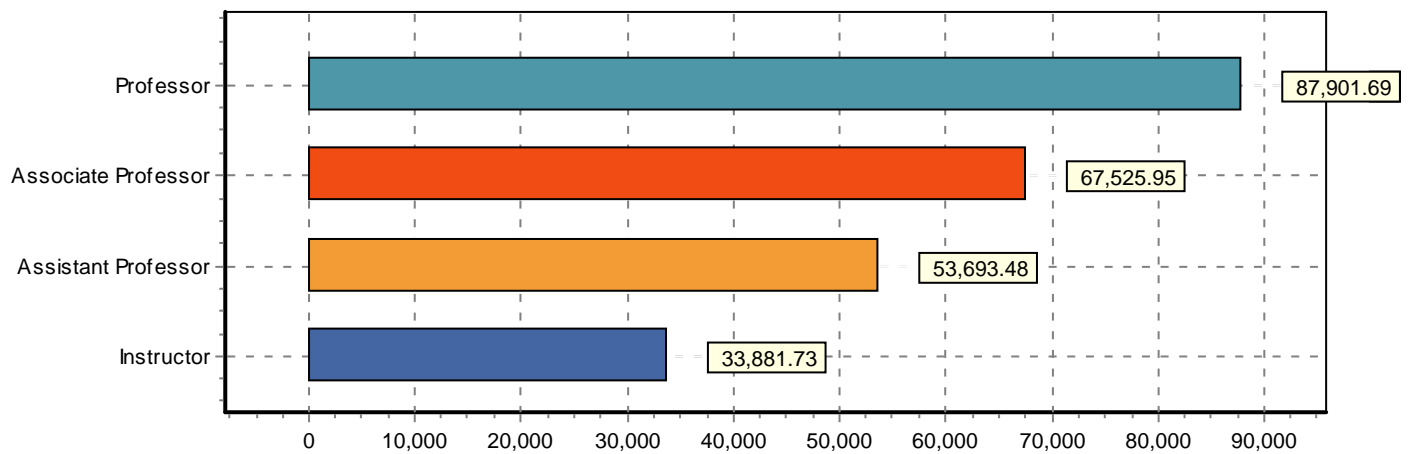
Totals for 2008



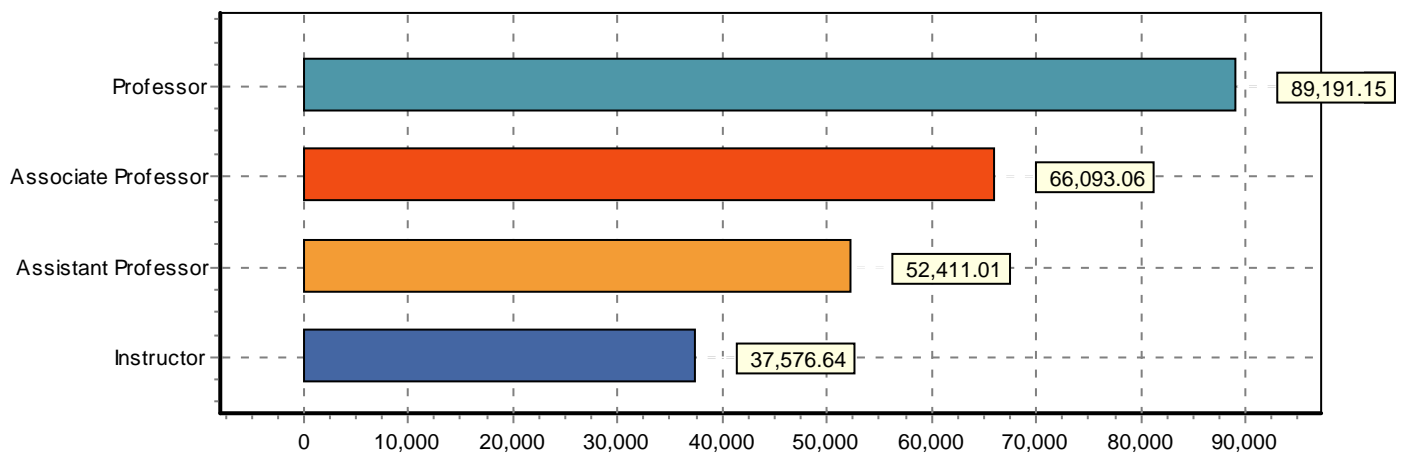


## Faculty Salary Averages by Fiscal Year

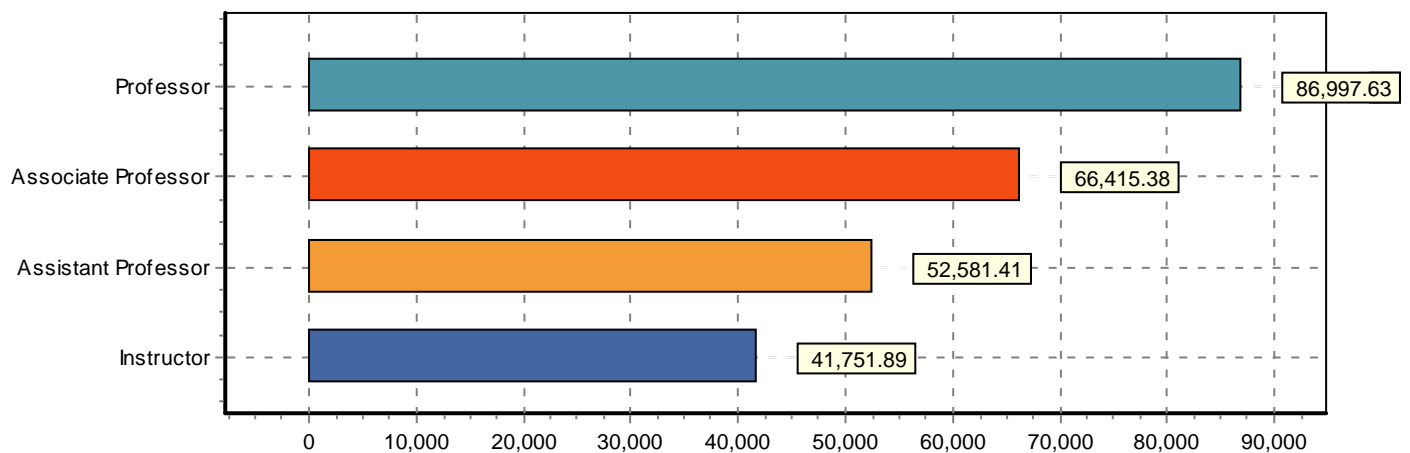
Averages for 2010



Averages for 2009



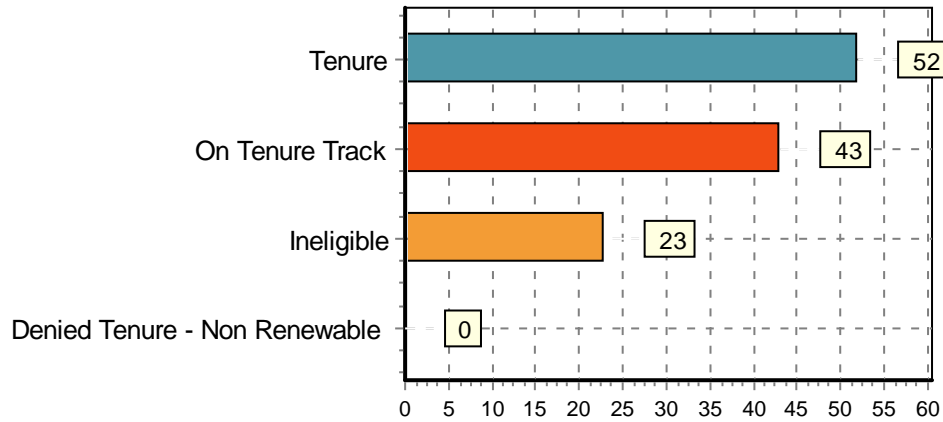
Averages for 2008



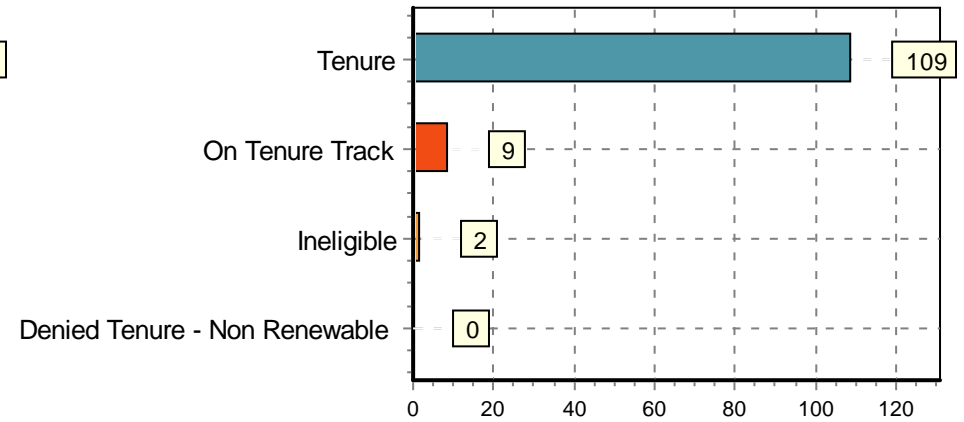


## Current Faculty Tenure Status

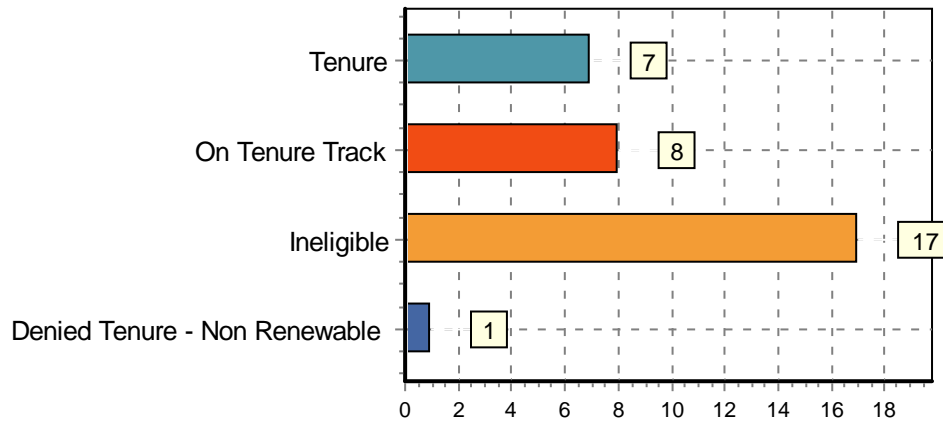
Assistant Professor



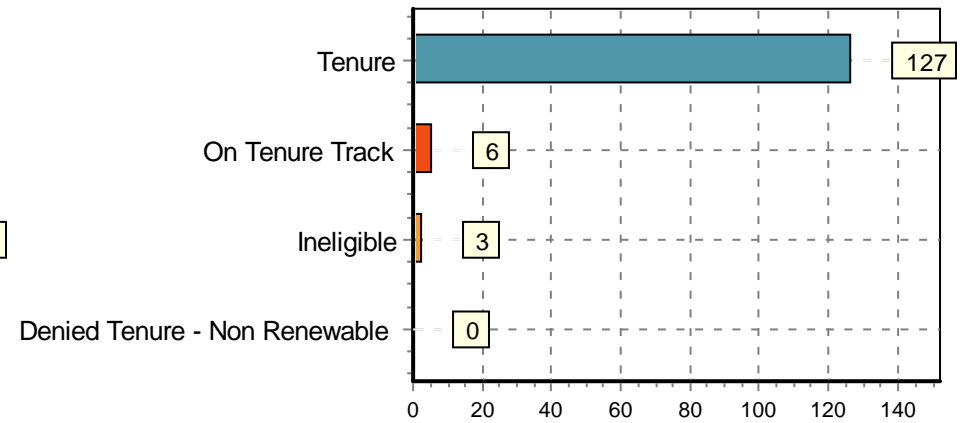
Associate Professor



Instructor

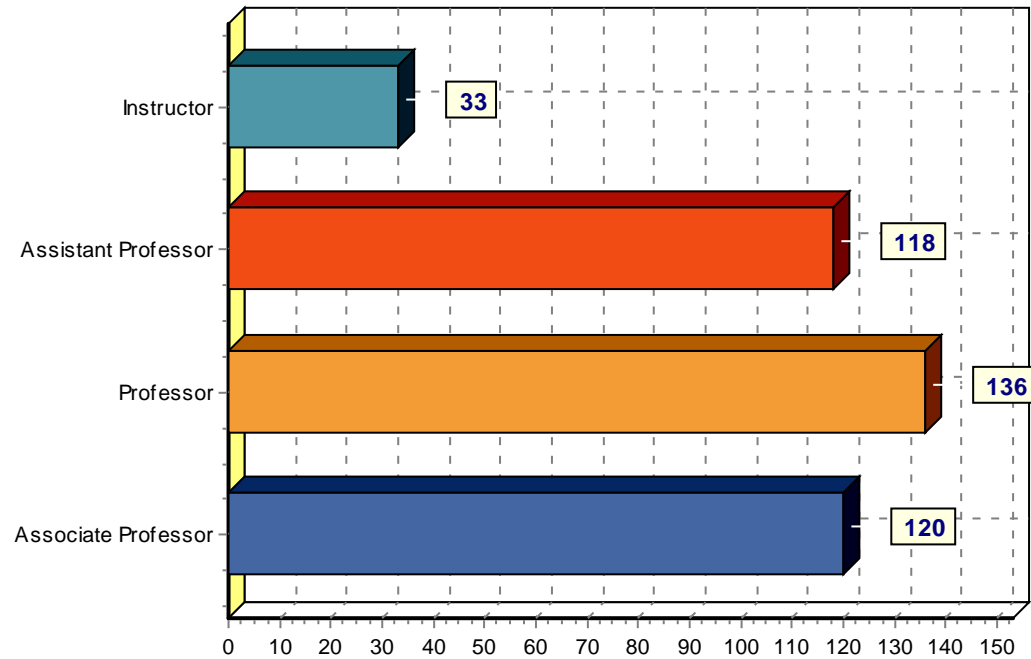


Professor





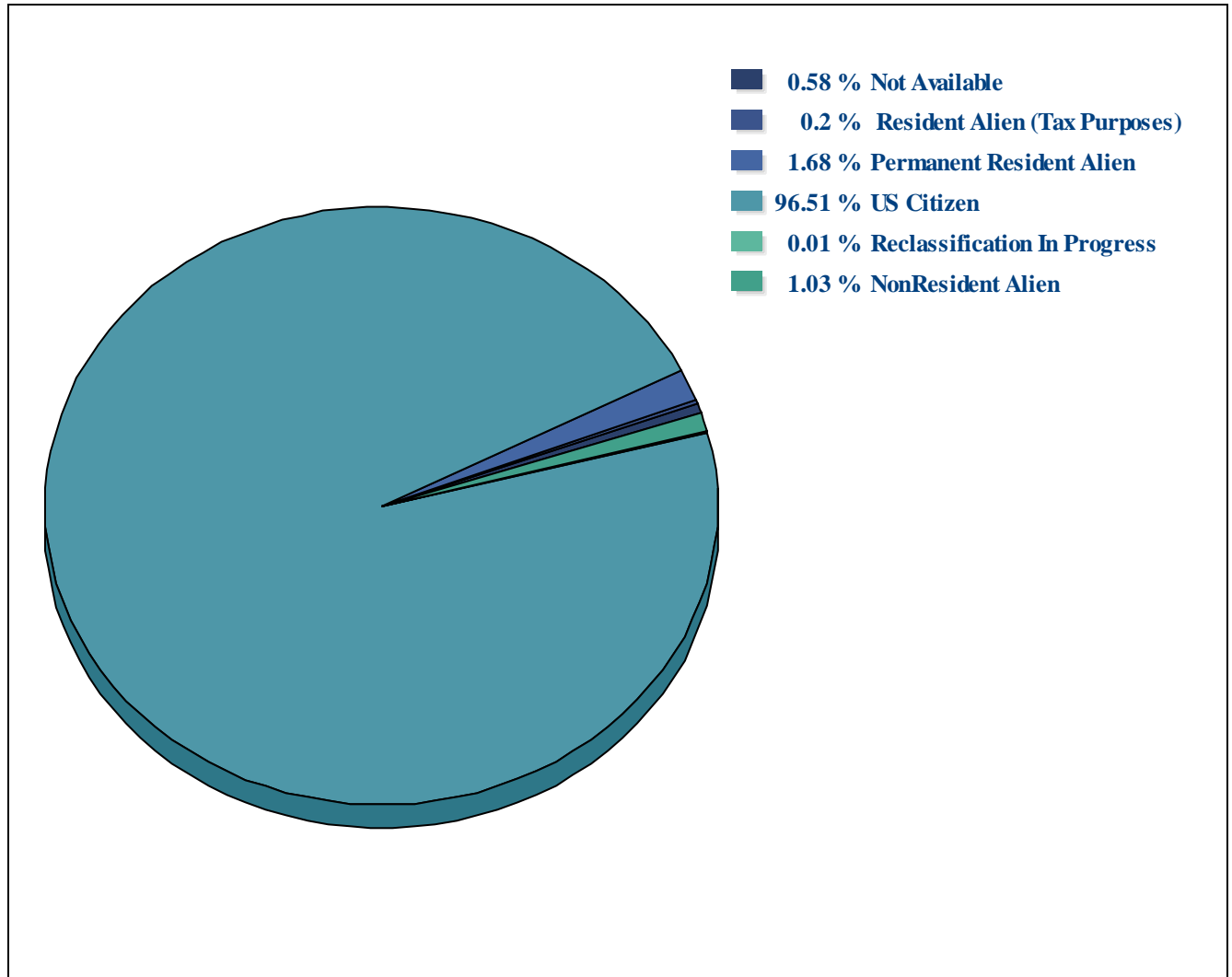
## Faculty Rank Chart

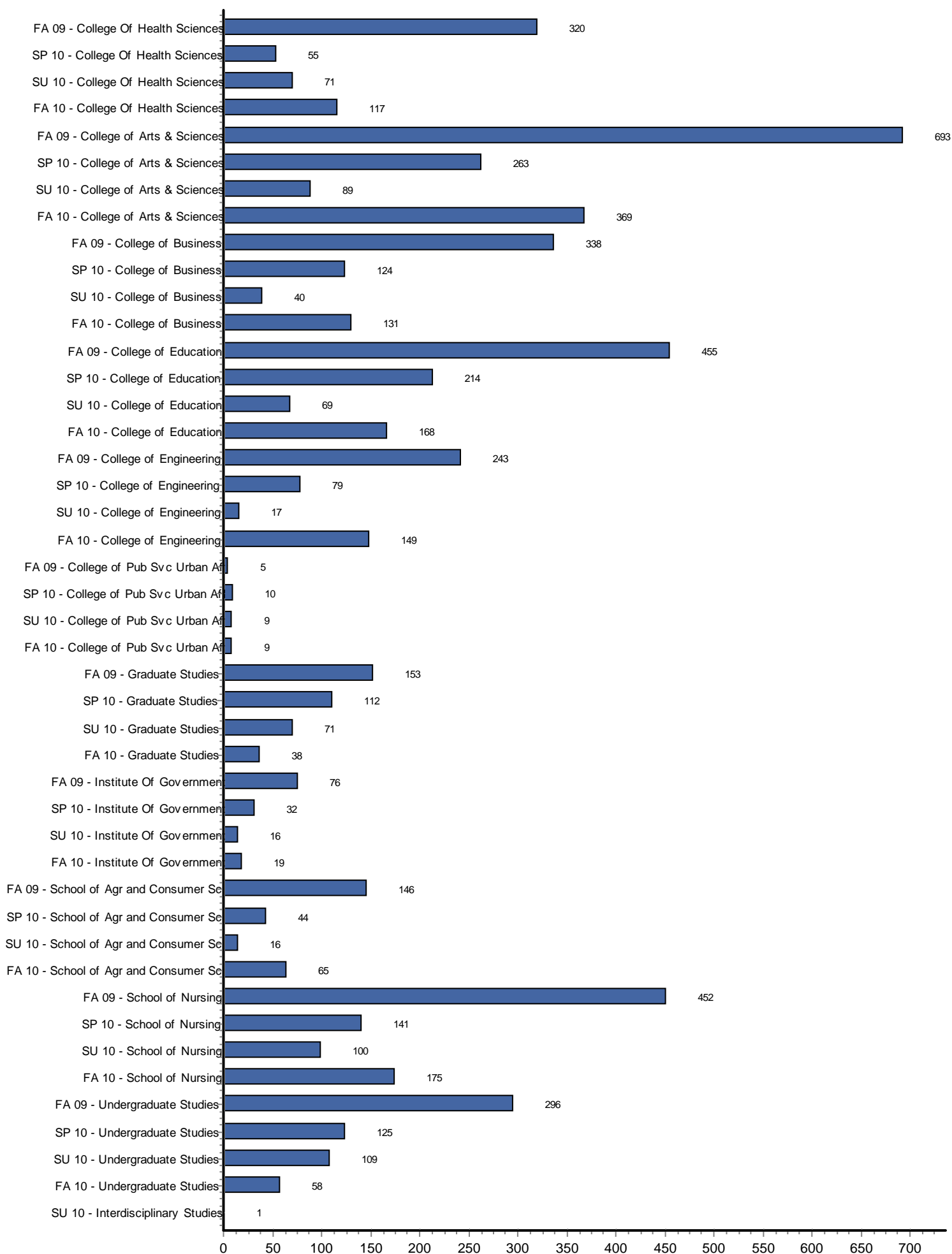


This chart lists the current number of Faculty and their Rank



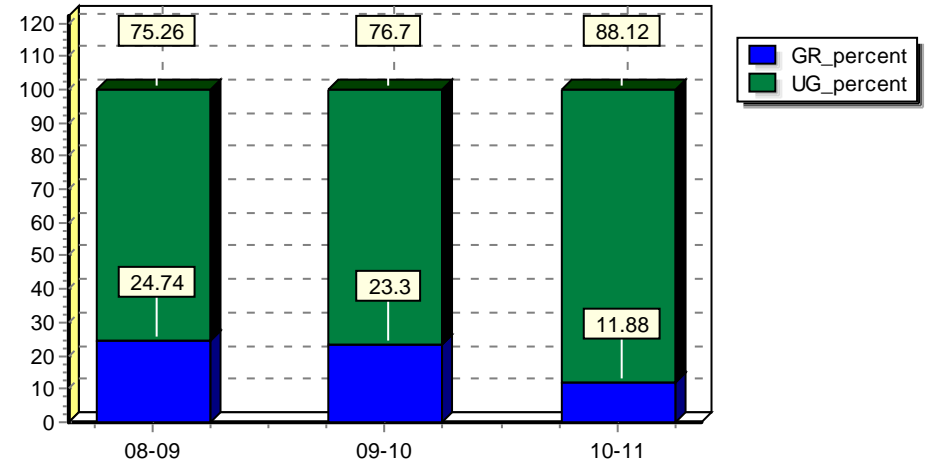
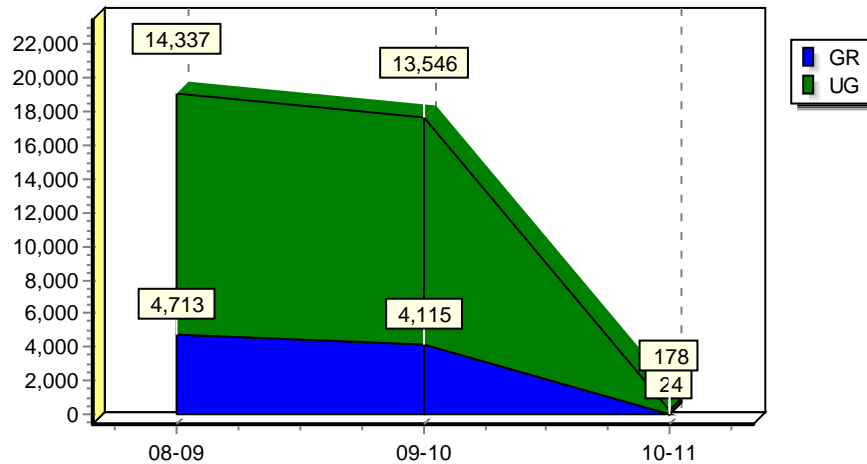
## Student Citizenship Percentages



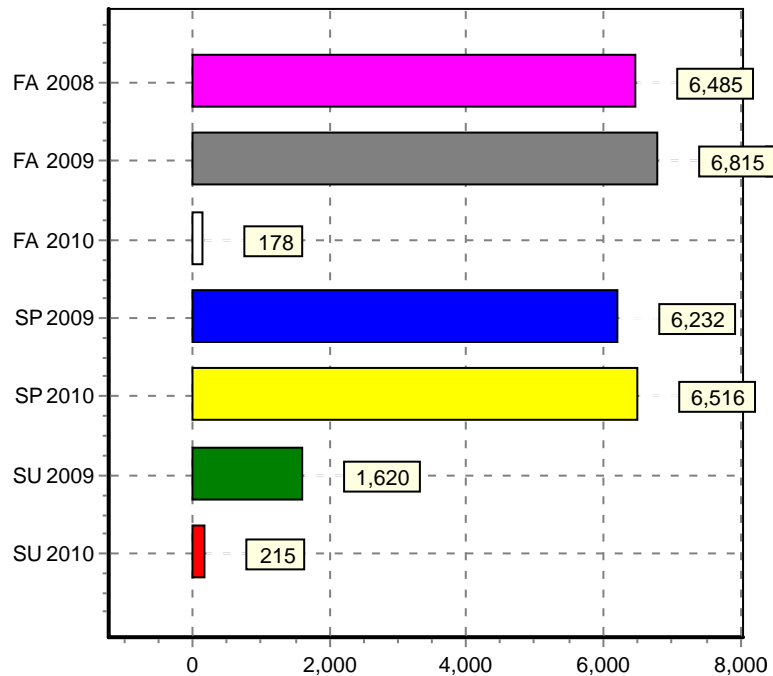


## Undergraduate to Graduate Ratio

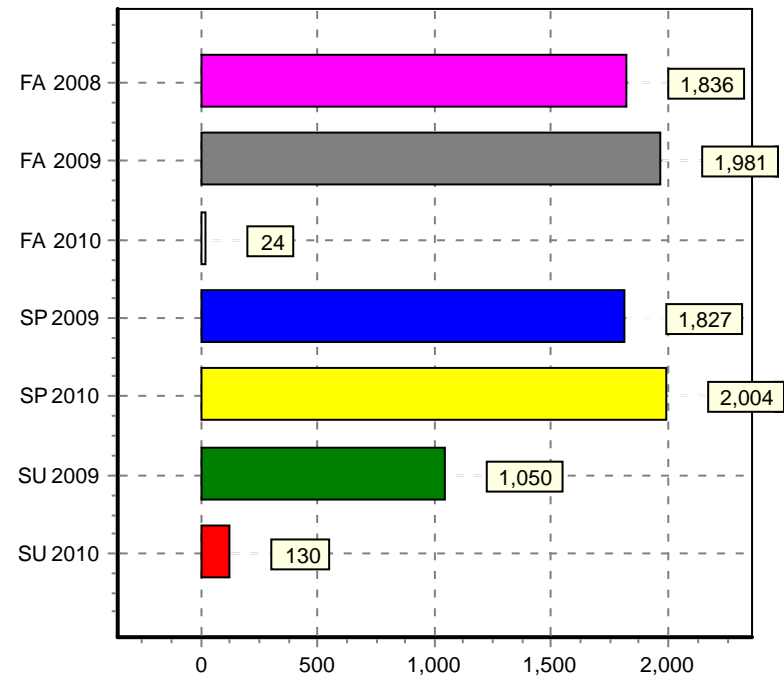
E10  
7/9/2010



Undergraduate Enrollment by Period



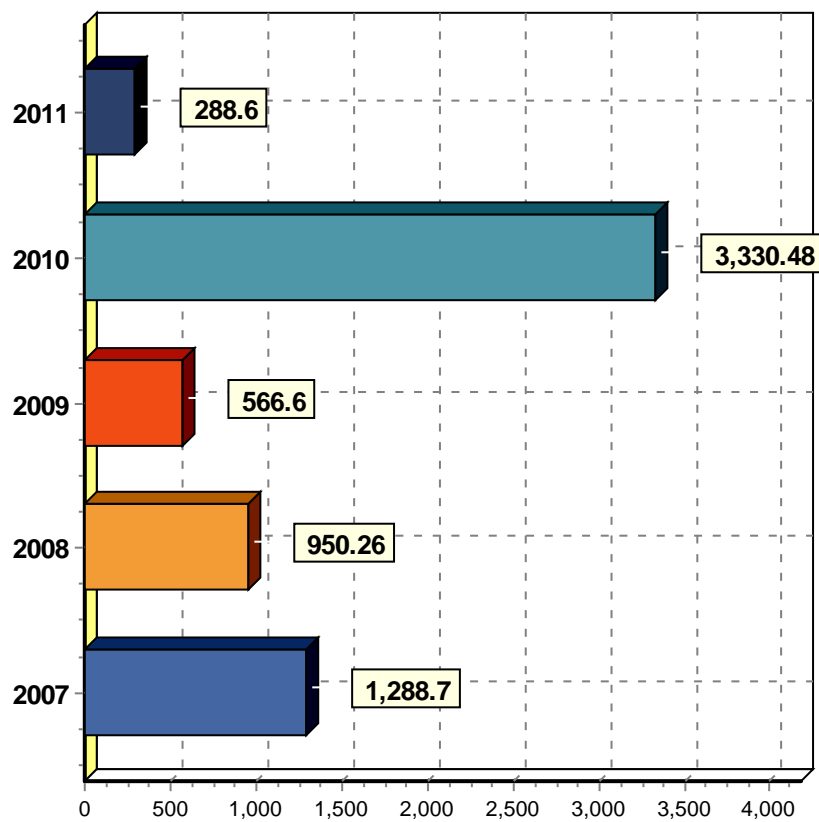
Graduate Enrollment by Period



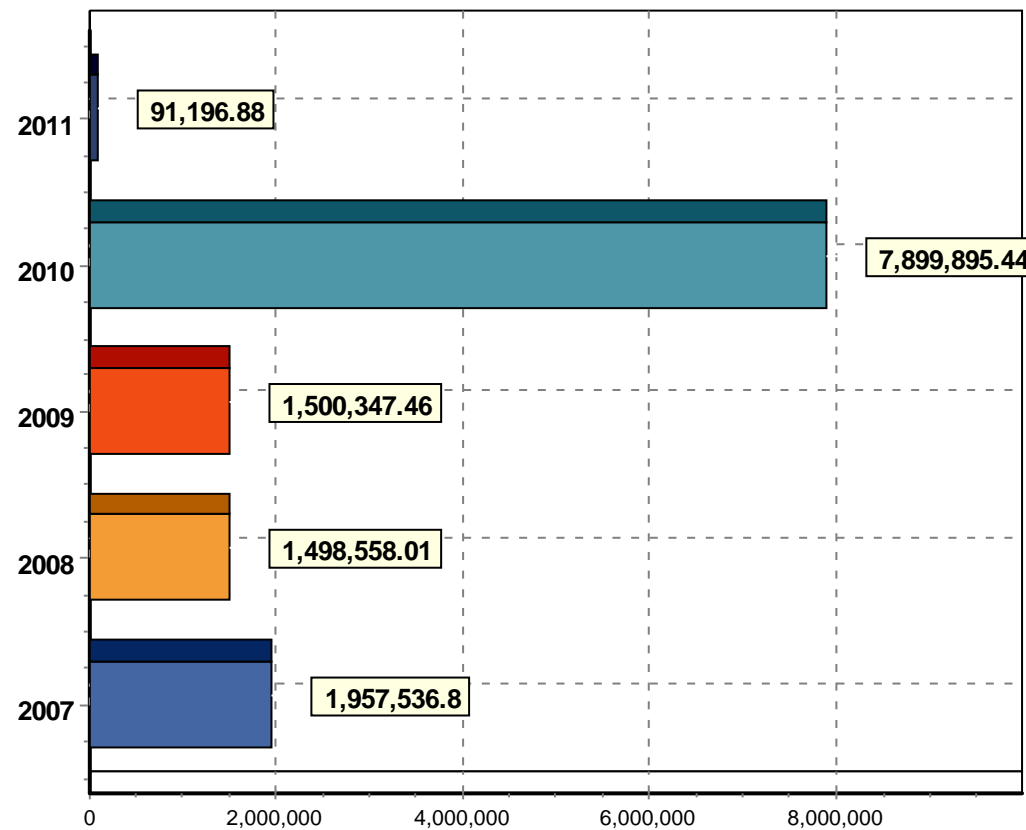


## Alumni Giving

Average Gift Amount

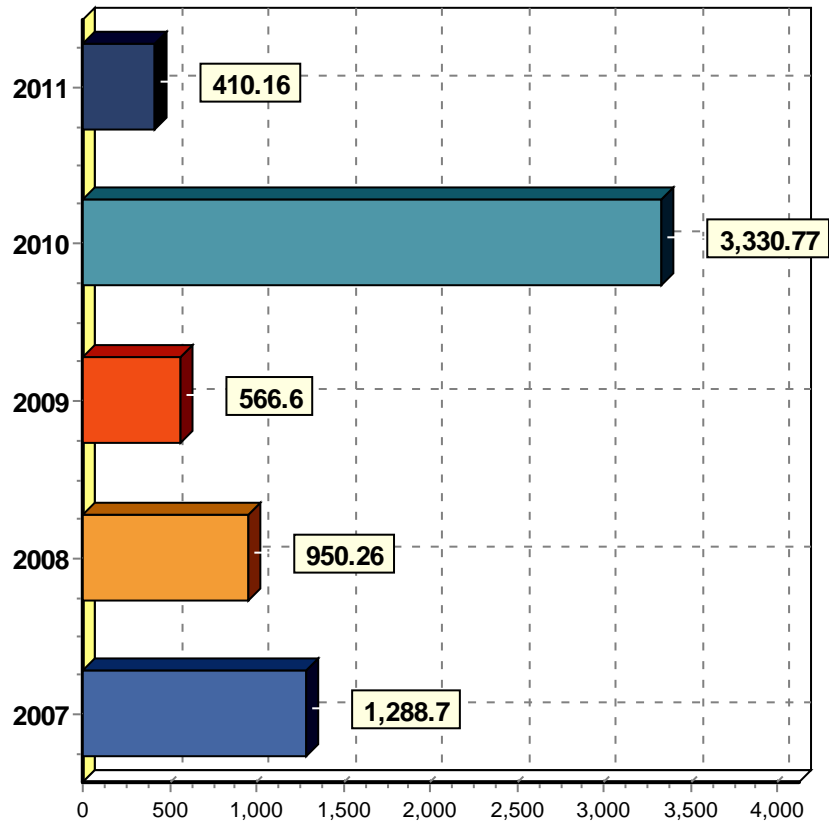


Total Annual Gift Amount

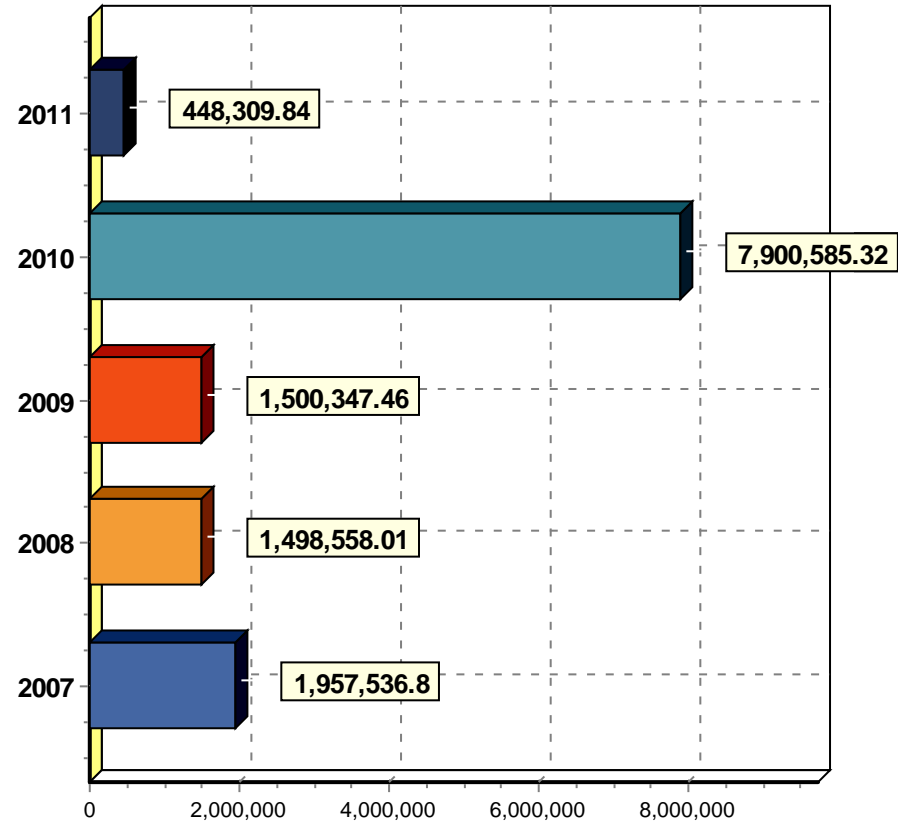


## Alumni Giving

**Average Gift Amount**

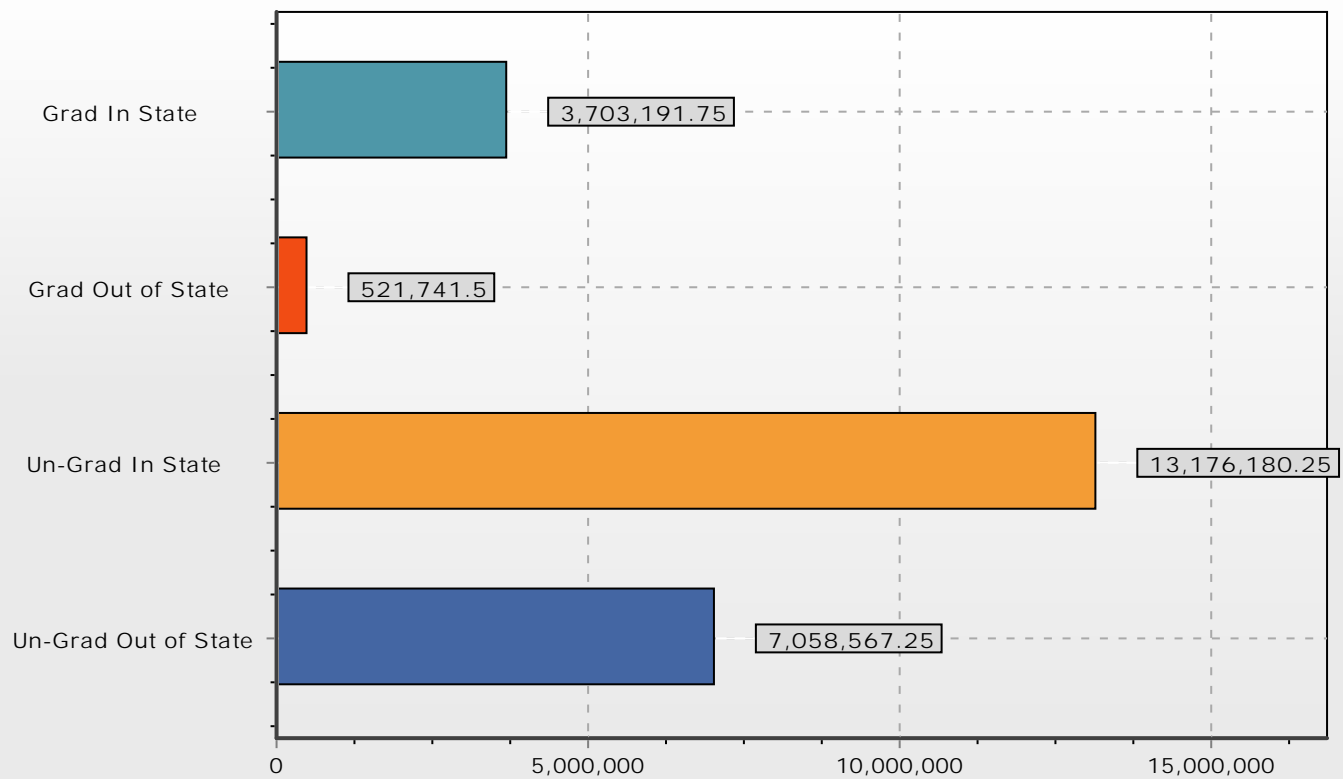


**Total Annual Gift Amount**





## Revenue Totals from Tuition

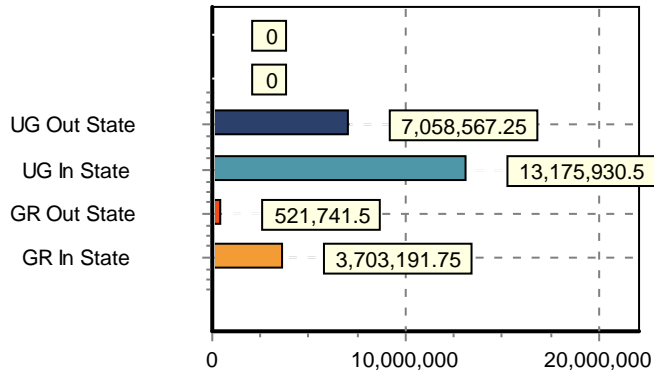




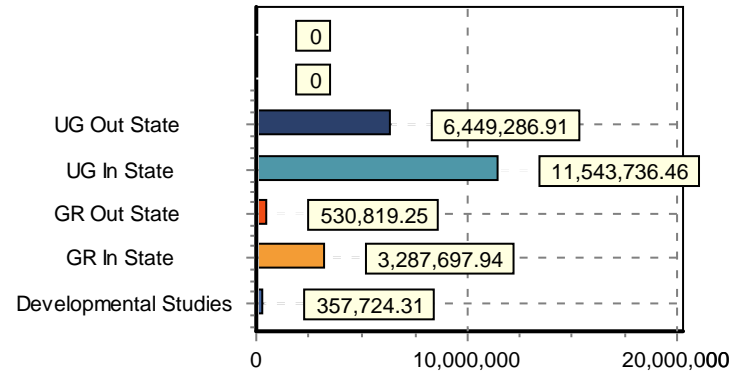


## Revenues from Tuition by Term

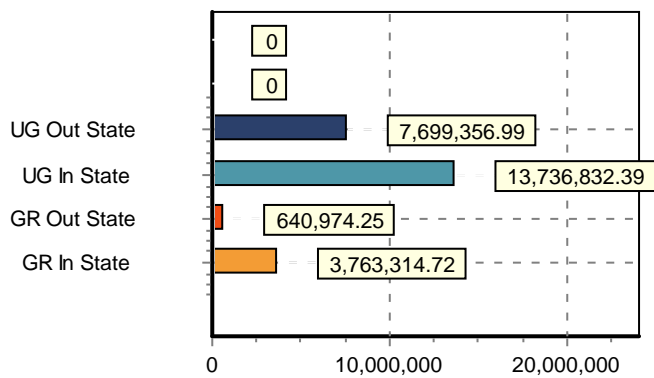
Spring 2010



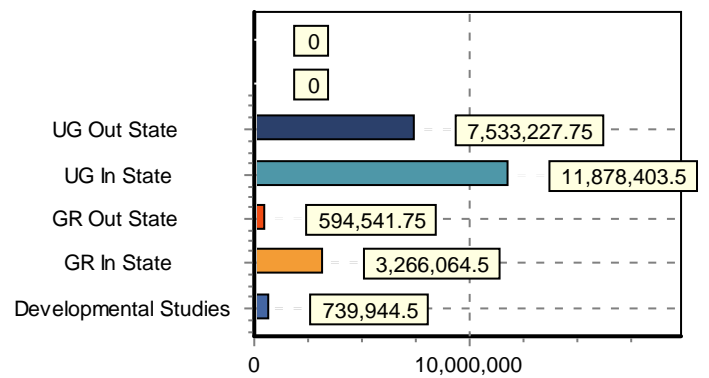
Spring 2009



Fall 2009



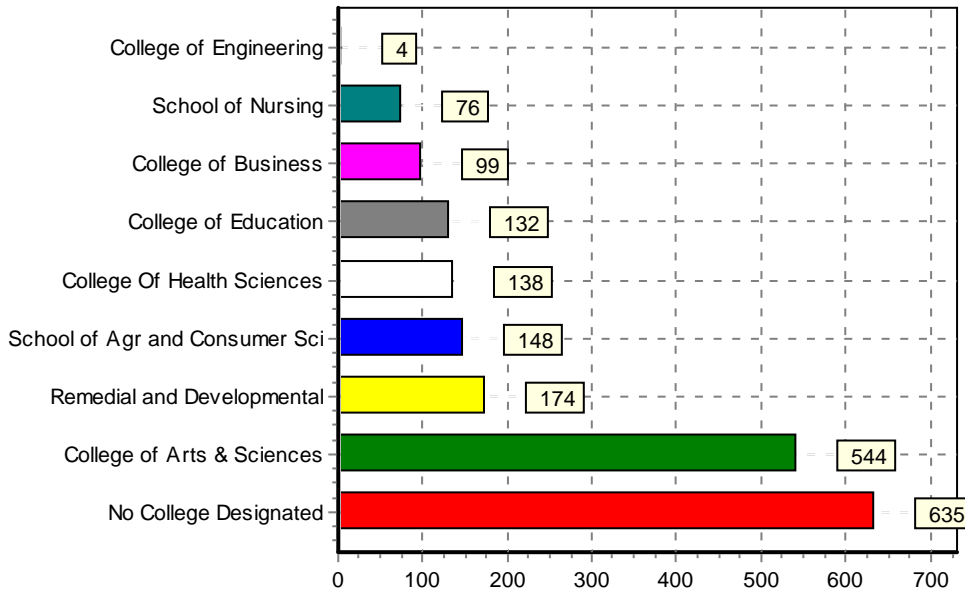
Fall 2008





## Student Online Enrollment

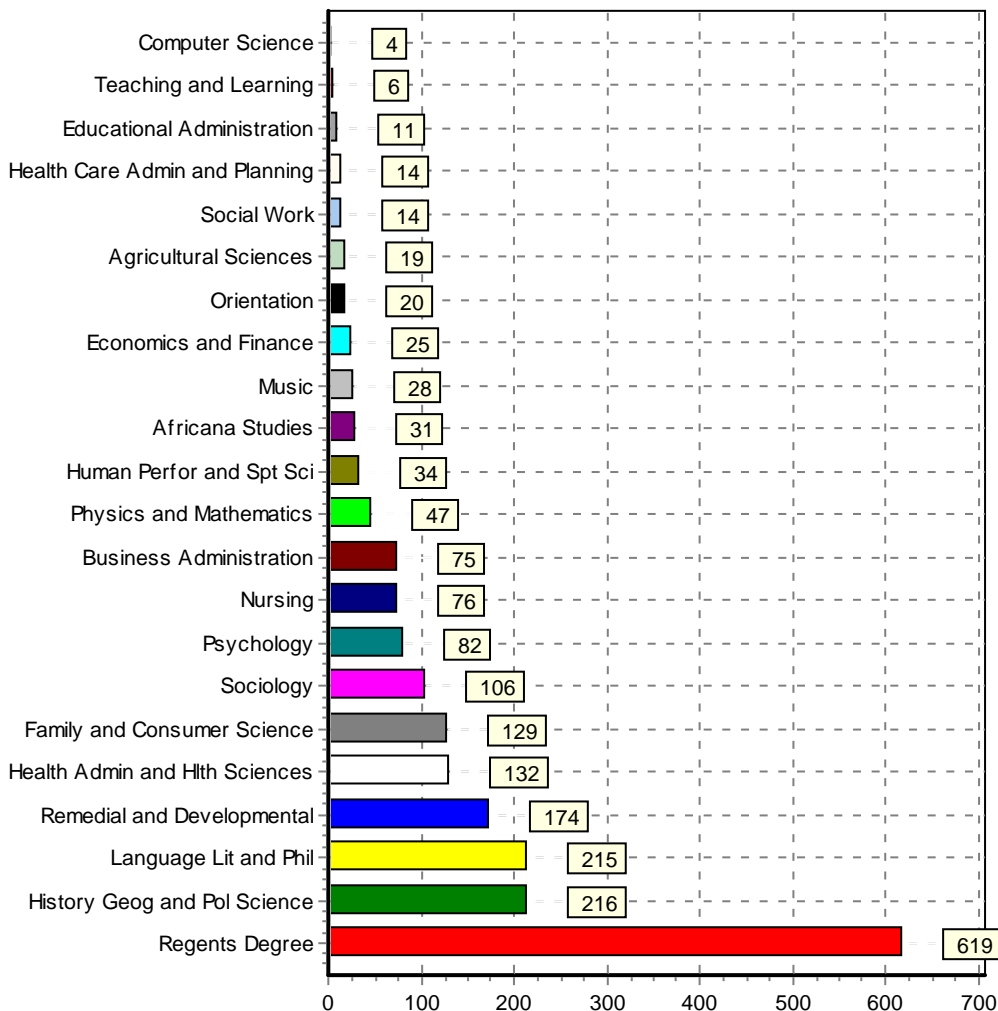
College



### Count SUBJECT DESC

189	History
165	English
140	Nursing
125	Psychology
116	Education (RODP)
116	Health Sciences
113	Sociology
86	Biology
72	Mathematics
70	Writing
69	Early Childhood Family Science
60	Math
59	Marketing
58	Philosophy
57	Spanish
44	Health Care Admin and Planning
43	Study Skills
37	Geography
35	Nutrition and Foods
34	Human Perfor and Sport Science
33	Interdisciplinary Stud (RODP)
32	Political Science
32	Family Econ Resource Mgmt
31	Management
31	Africana Studies
28	Music
27	Psychology (RODP)
26	Reading
25	Economics
21	Art
20	Orientation Undecided Major
19	Agricultural Sciences
17	Sociology (RODP)
16	Music (RODP)
14	Family and Consumer Science
14	Social Work
13	Astronomy
12	Communications
12	Humanities (RODP)
11	Administration and Supervision
11	Chemistry
10	Medical Records Tech (RODP)
10	Women Studies
9	University (RODP)
8	Political Science (RODP)
7	French
7	Leadership (RODP)
7	Social Work (RODP)
6	Accounting (RODP Only)
6	College Studies (RODP)
6	Communications (RODP)

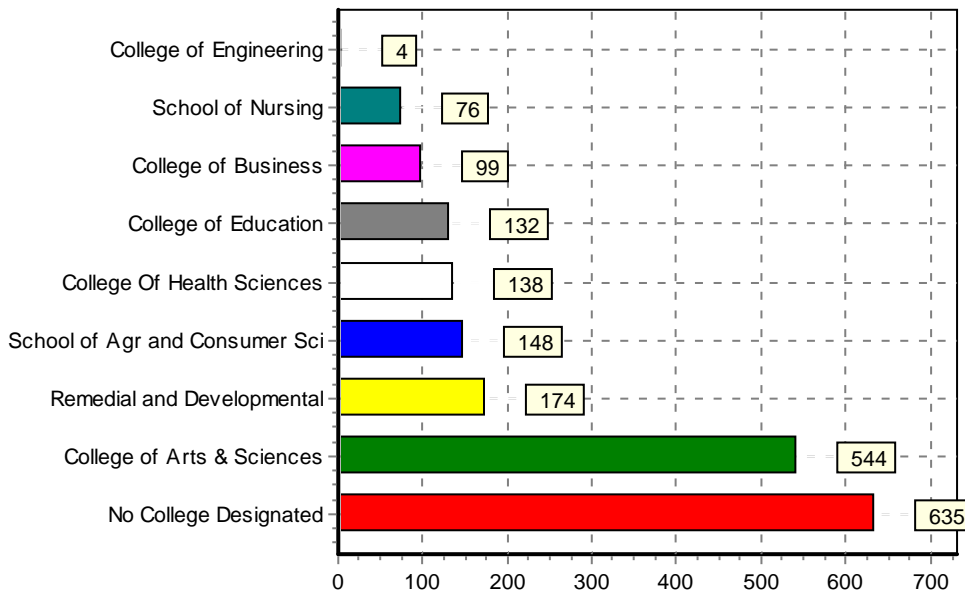
Department





## Student Online Enrollment

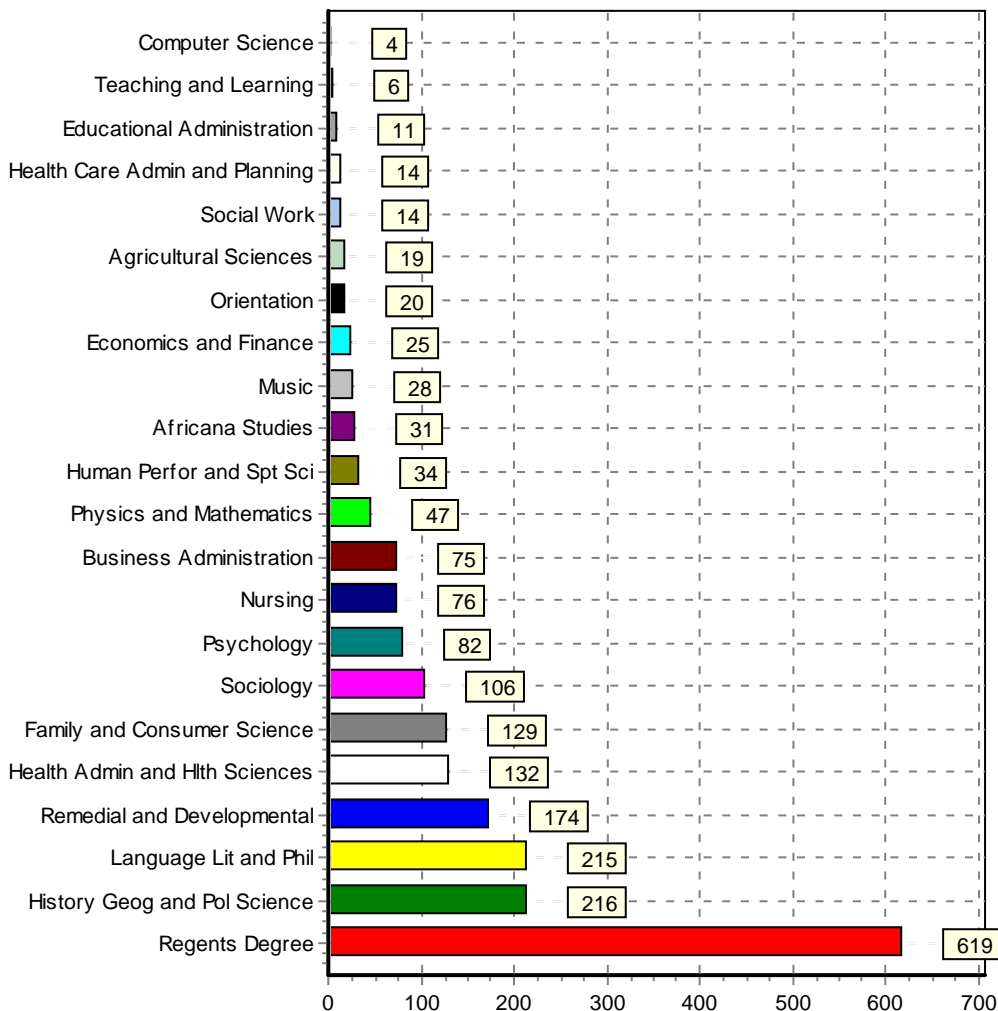
College



### Count SUBJECT DESC

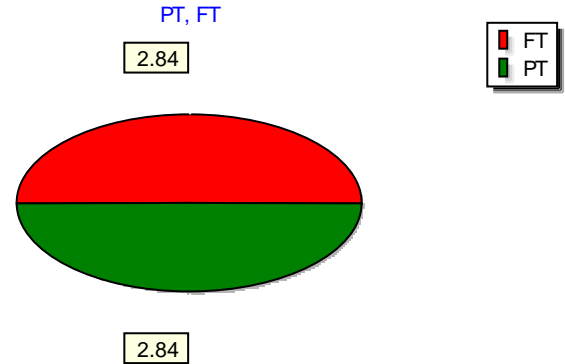
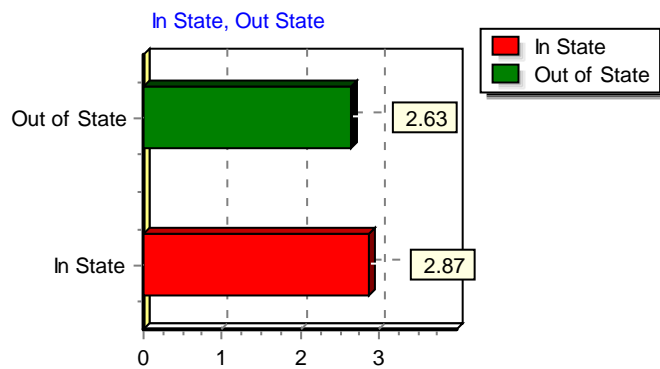
6	Curriculum and Instruction
6	Journalism (RODP)
6	Natural and Phy Sci (RODP)
6	Speech (RODP)
5	Business Mgmt (RODP Only)
5	Theatre (RODP)
5	Public Administration
5	Management (RODP)
5	Business Mgmt (RODP)
4	Information Syst (RODP)
4	Computer Science
4	Computer Info Syt (RODP)
4	Educ and Phy Edu (RODP)
4	Organizational Comm(RODP)
3	Computer Science (RODP)
3	Criminal Just Adm (RODP)
3	Computer Sci Tech (RODP Only)
2	Agriculture (RODP ONLY)
2	Marketing (RODP)
1	Web Development (RODP)
1	Technology (RODP)
1	Physics
1	Interdisciplinary Studies
1	Information Tech (RODP)
1	Human Movement Sci (RODP)
1	Public Management (RODP)

Department





## Mean Transfer GPA

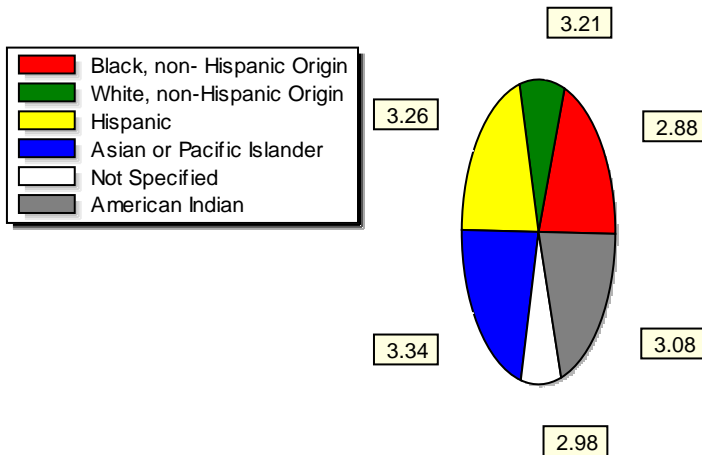


TERM	LEVEL	RESIDENCY	Transferred GPA	OVERALL GPA	GENDER	ETHNICITY	FT PT
201080	UG	In State	3.16	3.13	M	Asian or Pacific Islander	FT
201080	UG	In State	2.6	2.56	F	Black, non- Hispanic Origin	FT
201080	UG	In State	2.59	2.43	M	Black, non- Hispanic Origin	FT
201080	UG	In State	2.97	2.99	M	Not Specified	FT
201080	UG	In State	3.24	3.23	F	White, non-Hispanic Origin	FT
201080	UG	In State	3.01	2.44	M	White, non-Hispanic Origin	FT
201080	UG	In State	3.45	3.39	M	Not Specified	FT
201080	UG	In State	3.21	3.1	F	American Indian	PT
201080	UG	In State	3.11	2.38	M	American Indian	PT
201080	UG	In State	2.1	0	F	Asian or Pacific Islander	PT
201080	UG	In State	3.62	1.19	M	Asian or Pacific Islander	PT
201080	UG	In State	2.68	2.35	F	Black, non- Hispanic Origin	PT
201080	UG	In State	2.68	1.8	M	Black, non- Hispanic Origin	PT
201080	UG	In State	2.96	2.96	F	Not Specified	PT
201080	UG	In State	2	0	M	Not Specified	PT
201080	UG	In State	3.15	2.8	F	White, non-Hispanic Origin	PT
201080	UG	In State	3.05	2.95	M	White, non-Hispanic Origin	PT
201080	UG	In State	1.5	0.75	F	Not Specified	PT
201080	UG	Out of State	2.73	2.31	F	Black, non- Hispanic Origin	FT
201080	UG	Out of State	2.45	2.1	M	Black, non- Hispanic Origin	FT
201080	UG	Out of State	3.69	3.7	M	Hispanic	FT
201080	UG	Out of State	3.14	3.17	M	White, non-Hispanic Origin	FT
201080	UG	Out of State	3.15	3.15	M	Asian or Pacific Islander	PT
201080	UG	Out of State	2.5	2.44	F	Black, non- Hispanic Origin	PT
201080	UG	Out of State	2.38	2.38	M	Black, non- Hispanic Origin	PT
201080	UG	Out of State	3.28	3.28	M	Hispanic	PT
201080	UG	Out of State	2.9	2.98	F	White, non-Hispanic Origin	PT

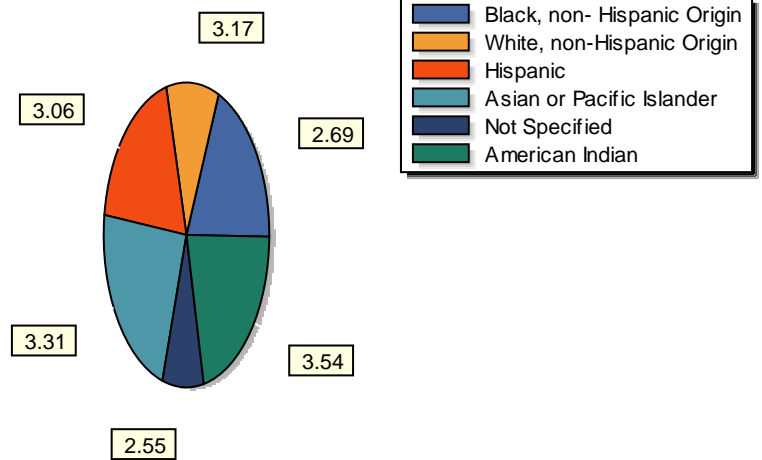


## New Freshman High School GPA

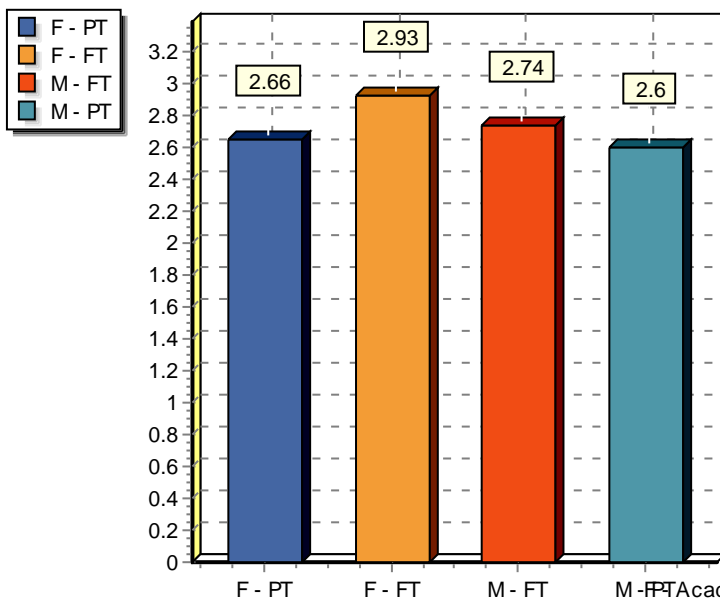
Female - Ethnicity



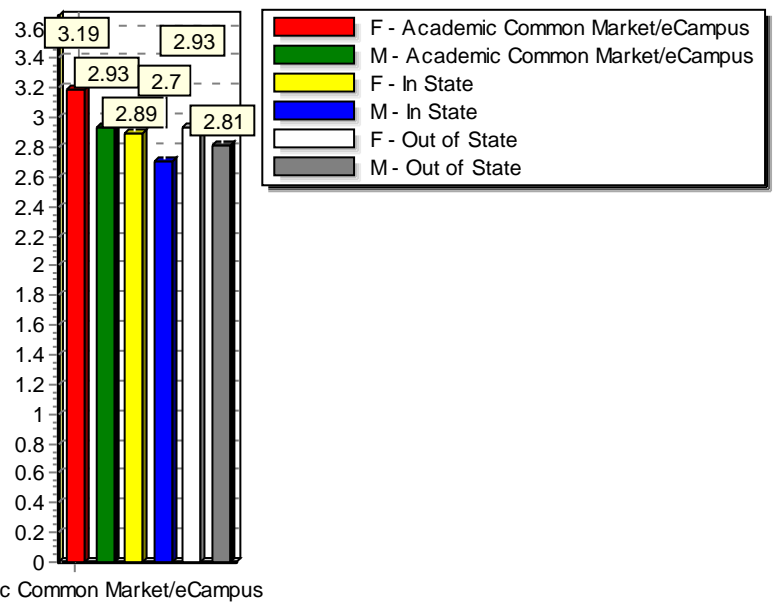
Male - Ethnicity



Part - Time, Full - Time

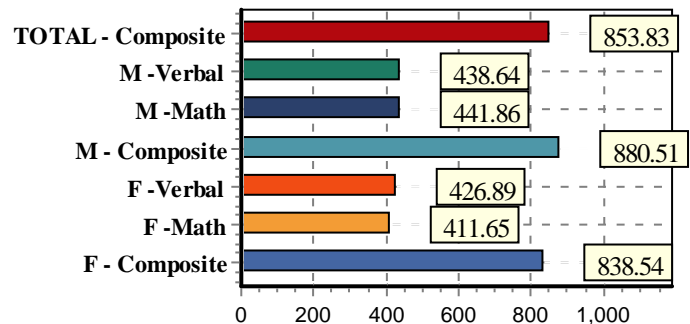


Residency

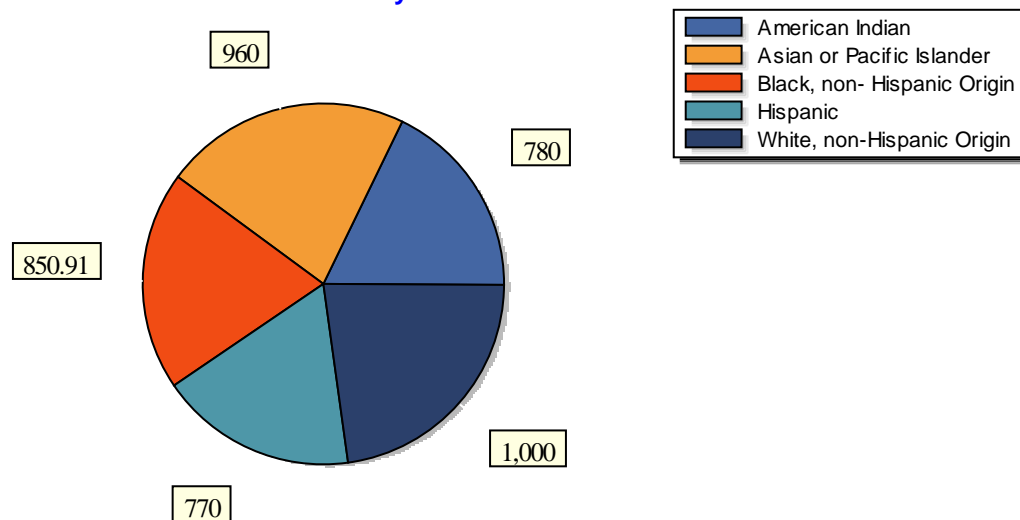


## New Freshman Average SAT - ACT Scores

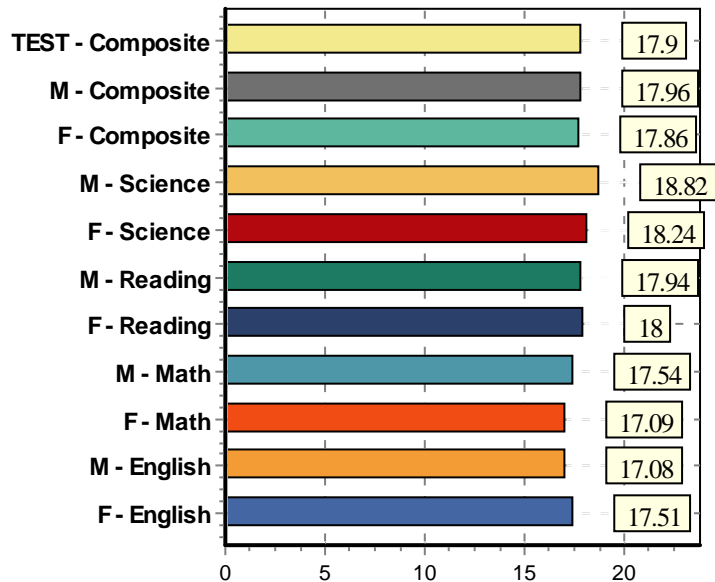
AVG SAT SCORES



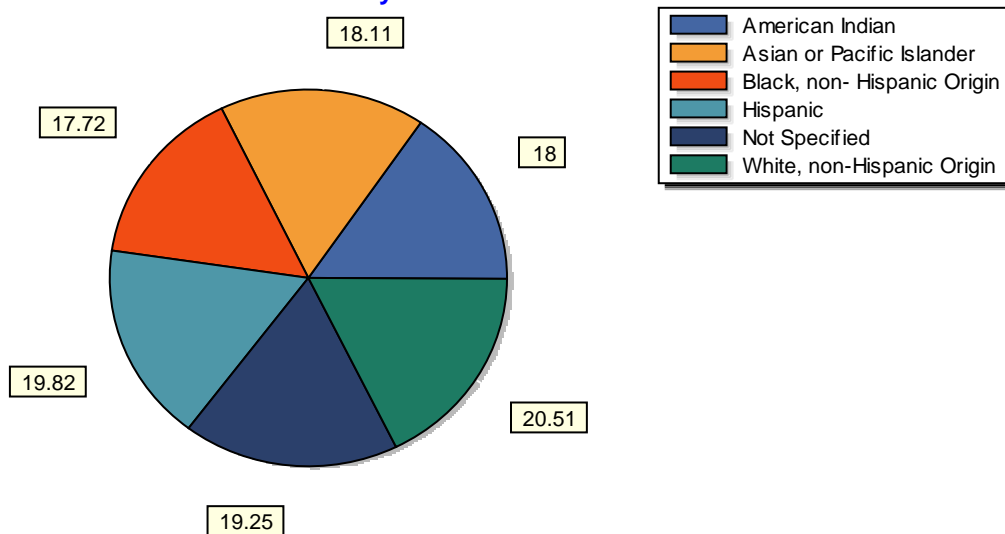
SAT Ethnicity



AVG ACT SCORES



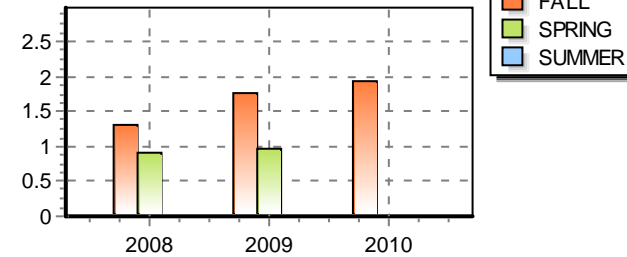
ACT Ethnicity





## Percent of Classes with greater then 50 students.

Percent &gt;50 by Year



## FALL

## SPRING

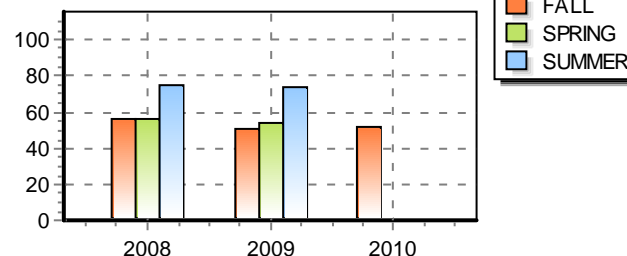
## SUMMER

College Subject	2009			2010			2009			2010			2009			2010		
	Total Classes	>50	%	Total Classes	>50	%	Total Classes	>50	%	Total Classes	>50	%	Total Classes	>50	%	Total Classes	>50	%
College of Arts & Sciences																		
Biology	130	15	11.54	111	16	14.41	120	12	10	116	9	7.76	37	0	0	51	0	0
College of Arts & Sciences																		
Chemistry	70	2	2.86	67	1	1.49	70	1	1.43	68	1	1.47	12	0	0	14	0	0
College of Arts & Sciences																		
Music	195	1	0.51	192	3	1.56	212	1	0.47	197	2	1.02	14	0	0	31	0	0
College of Arts & Sciences																		
Orientation Arts and Sci Major	7	5	71.43	7	3	42.86	4	0	0	4	0	0	0	0	0	1	0	0
College of Business																		
Economics	23	2	8.7	22	2	9.09	24	0	0	21	0	0	6	0	0	6	0	0
College of Business																		
Management	38	3	7.89	37	2	5.41	32	0	0	31	1	3.23	11	0	0	13	0	0
College of Education																		
Psychology	111	1	0.9	116	1	0.86	127	2	1.57	113	2	1.77	41	0	0	42	0	0
College of Engineering																		
Engineering	36	0	0	40	3	7.5	31	0	0	32	0	0	2	0	0	6	0	0
Remedial and Developmental																		
Orientation Undecided Major	6	0	0	7	1	14.29	6	0	0	5	0	0	1	0	0	1	0	0
School of Agr and Consumer Sci																		
Nutrition and Foods	8	0	0	8	0	0	6	2	33.33	5	1	20	1	0	0	1	0	0
School of Agr and Consumer Sci																		
Orientation Agr and Home Econ	1	0	0	1	1	100	1	0	0	1	0	0	0	0	0	0	0	0
School of Nursing																		
Nursing	77	7	9.09	81	7	8.64	52	0	0	65	3	4.62	18	0	0	21	0	0



## Percent of Classes with less than 19 students.

Percent <19 by Year



College Subject	FALL						SPRING						SUMMER					
	2009			2010			2009			2010			2009			2010		
	Total Classes	<19	%	Total Classes	<19	%	Total Classes	<19	%	Total Classes	<19	%	Total Classes	<19	%	Total Classes	<19	%
Aerospace Studies																		
Aerospace Science	29	28	96.55	30	30	100	32	32	100	30	28	93.33	0			0		
College Of Health Sciences																		
Cardio Respiratory Care Sci	21	13	61.9	21	14	66.67	11	7	63.64	14	7	50	5	2	40	5	2	40
College Of Health Sciences																		
Dental Hygiene	10	3	30	17	10	58.82	19	13	68.42	19	13	68.42	7	6	85.71	7	6	85.7
College Of Health Sciences																		
Health Care Admin and Planning	10	4	40	13	5	38.46	10	8	80	8	6	75	3	3	100	4	4	100
College Of Health Sciences																		
Health Information Management	14	11	78.57	14	11	78.57	13	9	69.23	12	8	66.67	3	3	100	4	4	100
College Of Health Sciences																		
Health Sciences	10	3	30	12	4	33.33	12	6	50	11	2	18.18	1	1	100	1	1	100
College Of Health Sciences																		
Medical Technology	0			0			1	1	100	1	1	100	0			0		
College Of Health Sciences																		
Occupational Therapy	22	17	77.27	22	20	90.91	20	20	100	24	24	100	11	11	100	11	9	81.8
College Of Health Sciences																		
Physical Therapy	16	0	0	16	0	0	15	0	0	15	0	0	10	0	0	10	0	0
College Of Health Sciences																		
Public Health	4	4	100	8	8	100	0			4	4	100	0			1	1	100
College Of Health Sciences																		
Speech Path and Audiology	25	13	52	26	9	34.62	30	24	80	25	18	72	19	11	57.89	17	13	76.4
College of Arts & Sciences																		
Africana Studies	10	3	30	12	6	50	13	4	30.77	12	5	41.67	3	3	100	3	3	100
College of Arts & Sciences																		
Anthropology	0			0			1	0	0	1	0	0	1	1	100	2	2	100
College of Arts & Sciences																		
Art	47	26	55.32	47	27	57.45	44	27	61.36	48	26	54.17	4	2	50	8	7	87.5
College of Arts & Sciences																		
Astronomy	3	2	66.67	2	2	100	5	5	100	5	4	80	0			1	1	100



11/10/2010

		FALL						SPRING						SUMMER					
College Subject		2009			2010			2009			2010			2009			2010		
		Total Classes	<19	%	Total Classes	<19	%	Total Classes	<19	%	Total Classes	<19	%	Total Classes	<19	%	Total Classes	<19	%
College of Arts & Sciences	Biology	130	45	34.62	111	26	23.42	120	46	38.33	116	38	32.76	37	18	48.65	51	25	49.0
College of Arts & Sciences	Chemistry	70	32	45.71	67	29	43.28	70	32	45.71	68	32	47.06	12	6	50	14	8	57.1
College of Arts & Sciences	Communications	59	14	23.73	73	26	35.62	58	14	24.14	72	24	33.33	5	2	40	8	3	37.5
College of Arts & Sciences	Criminal Justice	25	7	28	26	9	34.62	23	7	30.43	27	9	33.33	6	6	100	5	5	100
College of Arts & Sciences	English	102	31	30.39	104	28	26.92	111	37	33.33	107	34	31.78	17	12	70.59	18	11	61.1
College of Arts & Sciences	French	4	3	75	4	3	75	4	3	75	4	3	75	0			0		
College of Arts & Sciences	Geography	7	3	42.86	7	3	42.86	8	5	62.5	8	4	50	0			3	3	100
College of Arts & Sciences	Health Care Admin and Planning	0			1	1	100	0			0			0			0		
College of Arts & Sciences	History	55	13	23.64	53	17	32.08	53	9	16.98	59	12	20.34	4	0	0	11	3	27.2
College of Arts & Sciences	Honors Program	4	2	50	5	4	80	6	6	100	7	7	100	1	1	100	0		
College of Arts & Sciences	Mathematics	75	26	34.67	76	29	38.16	81	40	49.38	81	43	53.09	14	11	78.57	19	13	68.4
College of Arts & Sciences	Modern Foreign Languages	1	1	100	0			4	4	100	2	2	100	1	1	100	1	1	100
College of Arts & Sciences	Music	195	174	89.23	192	169	88.02	212	188	88.68	197	174	88.32	14	12	85.71	31	30	96.7
College of Arts & Sciences	Orientation Arts and Sci Major	7	0	0	7	0	0	4	1	25	4	2	50	0			1	1	100
College of Arts & Sciences	Philosophy	8	0	0	8	1	12.5	11	1	9.09	10	1	10	1	0	0	1	0	0

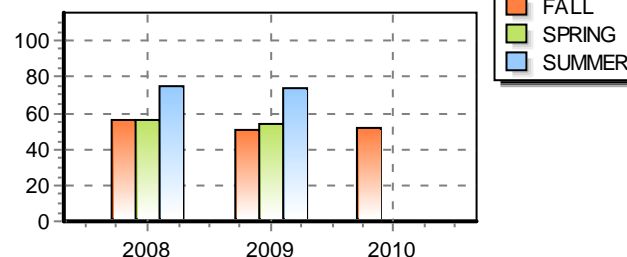
11/10/2010

		FALL						SPRING						SUMMER					
College Subject	2009			2010			2009			2010			2009			2010			
	Total Classes	<19	%	Total Classes	<19	%	Total Classes	<19	%	Total Classes	<19	%	Total Classes	<19	%	Total Classes	<19	%	
College of Arts & Sciences	Physics	27	17	62.96	27	20	74.07	23	12	52.17	23	11	47.83	7	7	100	10	5	50
College of Arts & Sciences	Political Science	20	15	75	20	15	75	20	15	75	19	12	63.16	3	3	100	3	2	66.6
College of Arts & Sciences	Religious Studies	2	0	0	2	0	0	2	0	0	2	0	0	1	0	0	1	0	0
College of Arts & Sciences	Social Work	21	19	90.48	28	26	92.86	15	12	80	18	17	94.44	0			5	5	100
College of Arts & Sciences	Sociology	43	13	30.23	44	12	27.27	38	7	18.42	39	12	30.77	5	4	80	9	3	33.3
College of Arts & Sciences	Spanish	19	8	42.11	19	9	47.37	18	8	44.44	17	8	47.06	4	3	75	4	4	100
College of Arts & Sciences	Statistics	3	3	100	3	3	100	3	3	100	3	3	100	0			0		
College of Arts & Sciences	Theatre	13	7	53.85	14	6	42.86	16	9	56.25	16	7	43.75	0			3	3	100
College of Arts & Sciences	Women Studies	3	1	33.33	2	0	0	3	1	33.33	3	1	33.33	0			0		
College of Business	Accounting	25	9	36	27	14	51.85	26	11	42.31	26	13	50	10	7	70	10	8	80
Business Info Systems Edu		4	2	50	4	1	25	4	0	0	3	0	0	1	1	100	2	1	50
Business Information Systems		20	8	40	18	6	33.33	19	8	42.11	22	13	59.09	6	4	66.67	5	4	80
College of Business	Business Law	5	1	20	5	2	40	5	2	40	4	0	0	2	1	50	1	0	0
College of Business	Economics	23	8	34.78	22	8	36.36	24	10	41.67	21	8	38.1	6	5	83.33	6	4	66.6
College of Business	Finance	7	2	28.57	8	1	12.5	6	1	16.67	8	5	62.5	2	2	100	2	1	50



## Percent of Classes with less than 19 students.

Percent <19 by Year

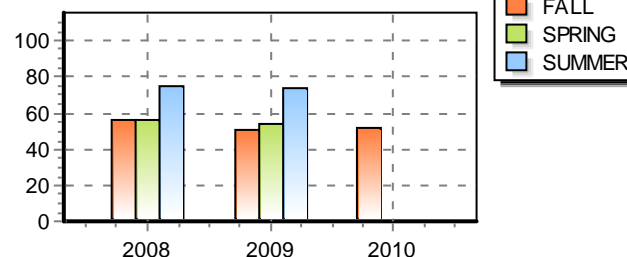


College Subject	FALL						SPRING						SUMMER					
	2009			2010			2009			2010			2009			2010		
	Total Classes	<19	%	Total Classes	<19	%	Total Classes	<19	%	Total Classes	<19	%	Total Classes	<19	%	Total Classes	<19	%
College of Business Management	38	14	36.84	37	18	48.65	32	13	40.63	31	13	41.94	11	9	81.82	13	11	84.6
College of Business Marketing	11	3	27.27	10	4	40	13	5	38.46	12	6	50	4	4	100	4	3	75
College of Business Real Estate	5	4	80	4	3	75	4	3	75	6	6	100	0			0		
College of Education Administration and Supervision	47	44	93.62	40	35	87.5	60	54	90	40	38	95	34	33	97.06	35	31	88.5
College of Education Curriculum and Instruction	49	38	77.55	43	33	76.74	55	42	76.36	55	40	72.73	26	22	84.62	29	25	86.2
College of Education Health, Phys Ed and Recreation	18	2	11.11	18	3	16.67	19	5	26.32	18	1	5.56	2	2	100	2	1	50
College of Education Human Perfor and Sport Science	58	18	31.03	65	25	38.46	60	28	46.67	60	17	28.33	13	12	92.31	13	10	76.9
College of Education Psychology	111	52	46.85	116	58	50	127	64	50.39	113	48	42.48	41	29	70.73	42	30	71.4
College of Education Reading in Education	7	5	71.43	6	4	66.67	9	9	100	8	7	87.5	1	1	100	1	0	0
College of Education Special Education	11	7	63.64	9	6	66.67	11	9	81.82	10	6	60	6	5	83.33	6	6	100
College of Engineering Aeronautical and Indus Tech	21	21	100	20	20	100	17	17	100	18	18	100	5	5	100	4	4	100
College of Engineering Architectural Engineering	5	3	60	6	5	83.33	8	8	100	9	9	100	0			0		
College of Engineering Civil Engineering	14	11	78.57	12	9	75	15	13	86.67	14	8	57.14	1	1	100	2	2	100
College of Engineering Computer Science	26	21	80.77	29	22	75.86	28	24	85.71	26	19	73.08	1	1	100	1	1	100
College of Engineering Computer and Info Sci Systems	9	9	100	11	11	100	9	9	100	9	9	100	3	3	100	4	4	100



## Percent of Classes with less than 19 students.

Percent <19 by Year



College Subject	FALL						SPRING						SUMMER					
	2009			2010			2009			2010			2009			2010		
	Total Classes	< 19	%	Total Classes	< 19	%	Total Classes	< 19	%	Total Classes	< 19	%	Total Classes	< 19	%	Total Classes	< 19	%
College of Engineering																		
Electrical Engineering	12	12	100	12	12	100	10	9	90	9	9	100	0			0		
College of Engineering																		
Engineering	36	15	41.67	40	18	45	31	16	51.61	32	16	50	2	2	100	6	6	100
College of Engineering																		
Mechanical Engineering	10	9	90	10	9	90	9	9	100	10	8	80	0			0		
College of Pub Svc Urban Aff																		
Nonprofit Management	1	1	100	1	1	100	3	3	100	3	3	100	1	1	100	1	1	100
College of Pub Svc Urban Aff																		
Public Administration	21	13	61.9	23	13	56.52	18	13	72.22	20	12	60	9	6	66.67	9	8	88.8
College of Pub Svc Urban Aff																		
Urban Studies	2	2	100	2	1	50	1	1	100	3	3	100	0			0		
Institute Of Government																		
Nonprofit Management	2	2	100	2	2	100	0			0			0			0		
No College Designated																		
Educ and Phy Edu (RODP)	1	1	100	1	1	100	0			1	1	100	0			0		
No College Designated																		
Education (RODP)	0			0			0			0			2	2	100	1	1	100
No College Designated																		
Education (RODP)	0			0			3	3	100	3	3	100	0			0		
No College Designated																		
Education (RODP)	3	3	100	3	3	100	2	2	100	2	2	100	2	2	100	0		
No College Designated																		
Education (RODP)	6	5	83.33	6	5	83.33	4	2	50	7	6	85.71	6	4	66.67	5	3	60
No College Designated																		
History	0			1	1	100	1	1	100	1	1	100	0			1	1	100
No College Designated																		
Interdisciplinary Stud (RODP)	2	2	100	3	3	100	1	1	100	2	2	100	3	3	100	3	3	100
No College Designated																		
National Student Exchange	1	1	100	0			1	1	100	0			0			0		

11/10/2010

		FALL						SPRING						SUMMER					
College Subject		2009			2010			2009			2010			2009			2010		
		Total Classes	< 19	%	Total Classes	< 19	%	Total Classes	< 19	%	Total Classes	< 19	%	Total Classes	< 19	%	Total Classes	< 19	%
No College Designated	Nursing	6	6	100	6	6	100	7	7	100	7	7	100	3	3	100	3	3	100
No College Designated	Orientation Undecided Major	1	1	100	1	1	100	0			1	1	100	0			0		
No College Designated	Study Abroad	1	1	100	1	1	100	0			1	1	100	0			0		
Remedial and Developmental	Math	48	5	10.42	49	3	6.12	34	4	11.76	39	2	5.13	3	3	100	6	6	100
Remedial and Developmental	Orientation Undecided Major	6	1	16.67	7	4	57.14	6	2	33.33	5	3	60	1	1	100	1	1	100
Remedial and Developmental	Reading	52	7	13.46	50	12	24	27	6	22.22	27	9	33.33	0			2	2	100
Remedial and Developmental	Study Skills	31	4	12.9	29	0	0	11	7	63.64	11	7	63.64	1	1	100	1	1	100
Remedial and Developmental	Writing	29	0	0	27	1	3.7	14	4	28.57	17	4	23.53	1	1	100	1	1	100
School of Agr and Consumer Sci	Agricultural Sciences	29	23	79.31	31	25	80.65	32	31	96.88	28	24	85.71	4	4	100	5	5	100
School of Agr and Consumer Sci	Design	5	4	80	5	4	80	5	5	100	4	4	100	1	1	100	1	1	100
School of Agr and Consumer Sci	Early Childhood Family Science	10	4	40	12	6	50	12	2	16.67	13	3	23.08	1	1	100	2	1	50
School of Agr and Consumer Sci	Family Econ Resource Mgmt	1	1	100	1	1	100	1	0	0	2	1	50	0			0		
School of Agr and Consumer Sci	Family and Consumer Science	5	3	60	5	3	60	5	4	80	4	3	75	2	2	100	2	2	100
School of Agr and Consumer Sci	Fashion	5	4	80	5	4	80	4	3	75	5	4	80	1	1	100	1	1	100
School of Agr and Consumer Sci	Nutrition and Foods	8	2	25	8	3	37.5	6	3	50	5	1	20	1	1	100	1	1	100

		FALL						SPRING						SUMMER					
College Subject		2009			2010			2009			2010			2009			2010		
		Total Classes	< 19	%	Total Classes	< 19	%	Total Classes	< 19	%	Total Classes	< 19	%	Total Classes	< 19	%	Total Classes	< 19	%
School of Agr and Consumer Sci	Orientation Agr and Home Econ	1	0	0	1	0	0	1	1	100	1	1	100	0			0		
School of Nursing	Nursing	77	57	74.03	81	63	77.78	52	34	65.38	65	48	73.85	18	12	66.67	21	18	85.7